




Climatic Bulletin

November 2013

 **Max
temperature**

 **Min
temperature**

 **Mean
temperature**

 **Precipitation**

 **Sunshine
duration**

November was a hot month, in general. It characterized by heavy rainfalls of long duration which caused local floods. In the case of flood over greater area of Rodos aerodrome human lives were lost. Thunderstorms associated with gale force winds caused a lot of local damages, as well.



ΕΘΝΙΚΗ
ΜΕΤΕΩΡΟΛΟΓΙΚΗ
ΥΠΗΡΕΣΙΑ

HELLENIC NATIONAL METEOROLOGICAL SERVICE



Temperature

First Decameron

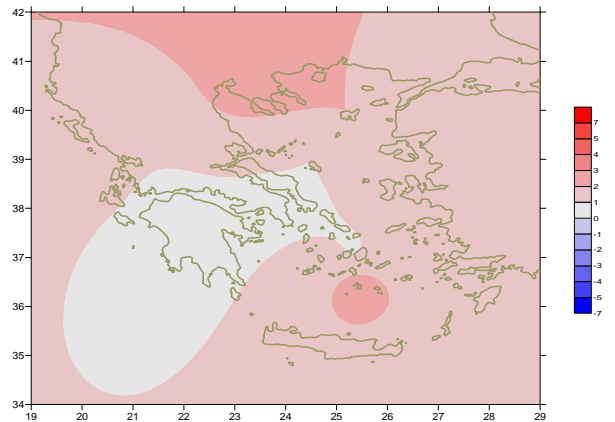
Minimum:

More specific varied :

from 0°C to 14°C over North mainland,
 from 4°C to 16°C over central mainland,
 from 8°C to 20°C over rest parts.

Maximum: More specific varied:

from 15°C to 26°C over North mainland,
 from 17°C to 26°C over central mainland,
 from 16°C to 25°C over rest parts.



Deviation of mean temperature from normal values

Second Decameron

Minimum:

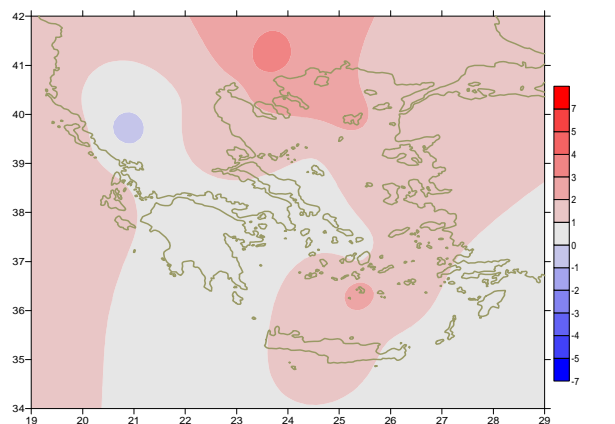
More specific varied :

from -1°C to 13°C over North mainland,
 from 0°C to 16°C over central mainland,
 from 5°C to 19°C over rest parts.

Maximum:

More specific:

from 9°C to 23°C over North mainland,
 from 14°C to 23°C over central mainland,
 from 15°C to 22°C over rest parts.



Deviation of maximum temperature from normal values

Third Decameron

Minimum:

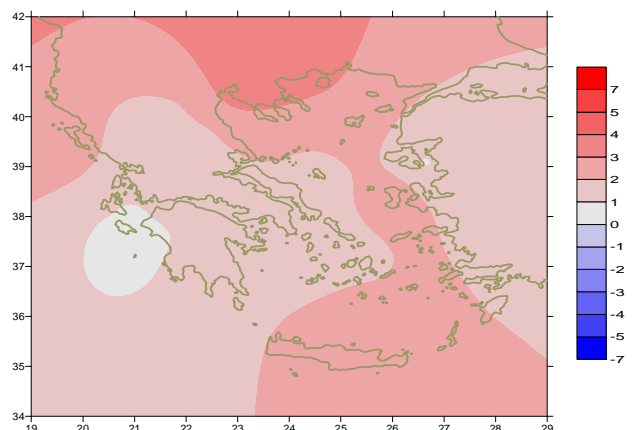
More specific varied :

from -6°C to 11°C over North mainland,
 from -1°C to 15°C over central mainland,
 from 4°C to 19°C over rest parts.

Maximum:

More specific:

From 3°C to 20°C over North mainland,
 from 5°C to 21°C over central mainland,
 from 8°C to 23°C over rest parts.



Deviation of minimum temperature from normal values

TABLE OF MEAN VALUES

STATION	Longitude	Latitude	Tmean	TX	TN	RR	INST
SERRES	23,53	41,07	12,3	17,1	8	49	85
FLORINA	21,40	40,78					
KASTORIA	21,27	40,45	9,3	14,3	4,6	123	95
TRIKALA_IMATHIAS	22,55	40,60					
THESSALONIKI	22,97	40,52	13,6	17,1	10,2	25	106
CHRYSOUPOLI	24,62	40,92	12,8	17	9,2	73	140
ALEXANDROUPOLI	25,95	40,85	12,5	16,5	9,3	126	129
KOZANI	21,83	40,28	9,5	14	5,8	48	
KERKYRA	19,92	39,62	15,9	20,2	12,7	195	94
IOANNINA	20,82	39,70	10,9	15,4	6	81	74
PREVEZA	20,76	38,91	15,9	18,9	13,6	354	
TRIKALA_THESSALIAS	21,77	39,52					
LARISA	22,45	39,65	12,4	17,8	7,4	31	100
LIMNOS	25,23	39,92	14,3	17,6	11,8	91	146
ARTA	21,00	39,17					
AGHIALOS	22,78	39,21					
MYTILINI	26,60	39,05	15,6	18,8	12,4	102	151
VELO	22,77	37,97					
AGRINIO	21,35	38,60					
LAMIA	22,43	38,87					
ANDRAVIDA	21,28	37,92	15,2	19,6	11,7	298	141
SKYROS	24,48	38,96	15,7	18	13,7	94	152
ARGOSTOLI	20,50	38,12	17,2	20,4	13,7	341	143
ARAXOS	21,42	38,15	15,3	19,4	11,6	156	142
TANAGRA	23,57	38,33	13,7	18,5	9,7	118	136
HIOS	26,13	38,35	15,4	18,6	12,7	121	156
PYRGOS	21,42	37,67					
TRIPOLI	22,40	37,52	10,7	16	6	211	124
TATOI	23,78	38,10	13,6	18,1	10,1	167	
HELLINIKO	23,73	37,90					
ELEYSINA	23,55	38,07	15,5	19,6	11,9	110	
ZAKYNTHOS	20,88	37,75	16,2	20,2	12,6	254	124
SAMOS	26,92	37,68					
ARGOS	22,75	37,63					
KALAMATA	22,02	37,07	15,3	20,6	11,2	360	149
NAXOS	25,37	37,10	17,1	19,4	14,9	106	144
METHONI	21,70	36,82					
MHLOS	24,43	36,73					
SPATA	23,95	37,95	15,6	19,2	10,9	104	
KOS	27,08	36,80	16,8	19,3	14,8	264	
KYTHIRA	22,98	36,15					
SANTORINI	25,41	36,41	18	20,3	15,3	41	181
SOUDA	24,12	35,55	17,1	20,8	14,1	98	150
RODOS	28,08	36,40	17,6	20,7	15	278	169
MYKONOS	25,35	37,43	16,7	18,7	15,3	68	
HERAKLEIO	25,18	35,33	18,4	21,7	15,7	43	148
IERAPETRA	25,73	35,02					
SITEIA	26,10	35,21	18,4	21,1	16,2	37	128
RETHYMNO	24,50	35,36					
TYMPAKI	24,76	35,06					
KASTELI	25,33	35,18	15,7	19,5	12,4	64	167
KARPATOS	27,15	35,42	19,1	21,4	17,2	29	
PAROS	25,13	37,02					
SYROS	24,95	37,42	17,3	19,6	15,3	102	181
IKARIA	26,35	37,68					

TABLE OF DEVIATIONS
FROM NORMAL VALUES

STATION	TMEAN (deviation) (I)	PRECI (deviation %) (II)
SERRES	3.2	91
FLORINA		
THESSALONIKI	2.7	43
ALEXANDROUPOLI	1.5	166
KOZANI	1.5	80
KERKYRA	1.7	108
IOANNINA	0.8	49
LARISA	1.6	53
LIMNOS	2	120
AGHIALOS		
MYTILINI	1.1	109
AGRINIO		
SKYROS	1	175
ARGOSTOLI	1.5	211
ARAXOS	0.7	117
HIOS	1.6	146
HELLINIKO		
ZAKYNTHOS	0.4	160
SAMOS		
KALAMATA	0.6	254
NAXOS	0.9	224
METHONI		
SANTORINI	2.6	76
SOUDA	1.5	135
RODOS	1.2	314
HERAKLIO	1.8	73
SITIA	1.6	61

(I) deviation of mean temperature from normal values
(II) deviation of monthly precipitation height from normal values %.



Precipitation

First Decameron

Locally strong rainfalls and thunderstorms over most parts .

More specific:

*95mm in Preveza, 56mm in Arta, 62mm in Karisto,
39mm in Spata at 6/11,
58mm in Chios, 62mm in Ikarria, 76mm in Kos at 7/11.*

Second Decameron

Locally strong rainfalls and thunderstorms temporarily mainly over Ionian area, west mainland and Aegean area.

More specific:

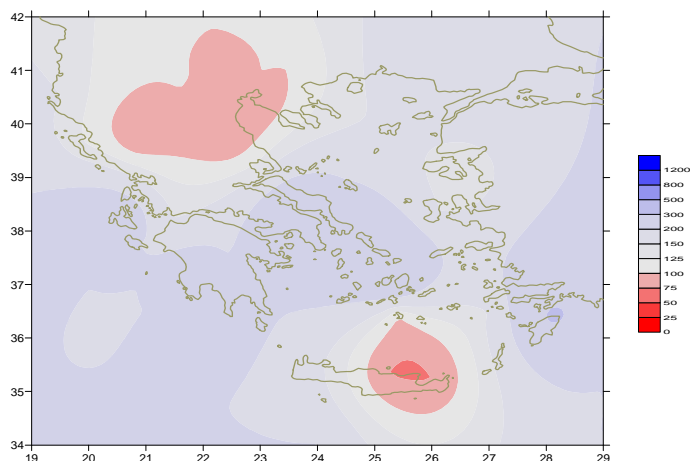
*46mm in Konitsa at 11/11, 43m in Zakynthos at 12/11,
79mm in Argostoli and 180mm in Leonidio at 13/11,
63mm in Kos at 15/11, 46mm in Souda at 16/11,
35mm in Hellinikon at 20/11.*

Third Decameron

Locally strong rainfalls of long duration and thunderstorms temporarily mainly over Attica, east Aegean area and Dodecannesse (a flood with tragic effects in Rodos).

More specific:

*174mm in Rodos , 48mm in Chios, 35mm in Ikarria at 22/11,
69mm in Preveza at 23/11,
42mm in Tripoli, 47mm in Tatoi, 27mm in Kolimvitirio at 24/11
and 38mm in Mitilini at 25/11.*



*Deviation of monthly precipitation
height from normal values (%)*

Climatic Bulletin

General Description

Precipitation amounts were higher than normal values mainly over Ionion, west mainland, eastern Aegean and Dodecannesse. The mean temperature varied higher than normal Values.

Climatic Parameters :

- ❖ **Normal Values** : normal values for various parameters (temperature, precipitation, etc) are defined as mean values calculated for 30 years. These normal values are used as basis and represent the mean situation. They can be specified in 10 daily, monthly, seasonally and yearly level and are used for the trend comparison of 10 days, month, season or year as: rainy decameron, mild winter, cool August etc.

Measurement :

- ❖ **Precipitation**
1 mm = 1 litre/m²

Table Legend :

Tmean : Mean Temperature
 TN : Minimum Temperature
 TX : Maximum Temperature
 RR : Precipitation height(mm)
 INST : Sun Duration (hours)

UTC hours (Universal Time Coordinates) in Greece :

- ❖ Winter : UTC hour = local hour - 2
- ❖ Summer : UTC hour = local hour - 3

© Hellenic National Meteorological Service
 Reproduction is prohibited without written authorization
 14 El.Venizelou 16777
 Helliniko, Athens
 Greece