



Climatic Bulletin

December 2015

 **Max
temperature**

 **Min
temperature**

 **Mean
temperature**

 **Precipitation**

 **Sunshine
duration**

This specific December recorded as one of the most dry ones dating back fifty years or more. In particular, the precipitation heights varied lower enough than normal values almost in every part of Greece. Also, this month characterized by longer sunshine duration and more frequent nights with clear sky which caused favourable conditions for frost formation over mainland.



ΕΘΝΙΚΗ
ΜΕΤΕΩΡΟΛΟΓΙΚΗ
ΥΠΗΡΕΣΙΑ

HELLENIC NATIONAL METEOROLOGICAL SERVICE



Temperature

First Decameron

More specific (varied) :

Minimum:

from -4°C to 13°C over north mainland,
 from -2°C to 13°C over central mainland,
 from -4°C to 15°C over rest parts.

Maximum:

from -2°C to 18°C over north mainland,
 from 8°C to 20°C over central mainland,
 from 13°C to 20°C over rest parts.

Second Decameron

More specific (varied) :

Minimum:

from -8°C to 8°C over north mainland,
 from -5°C to 11°C over central mainland,
 from 5°C to 14°C over rest parts.

Maximum:

from 6°C to 13°C over north mainland,
 from 9°C to 16°C over central mainland,
 from 12°C to 18°C over rest parts.

Third Decameron

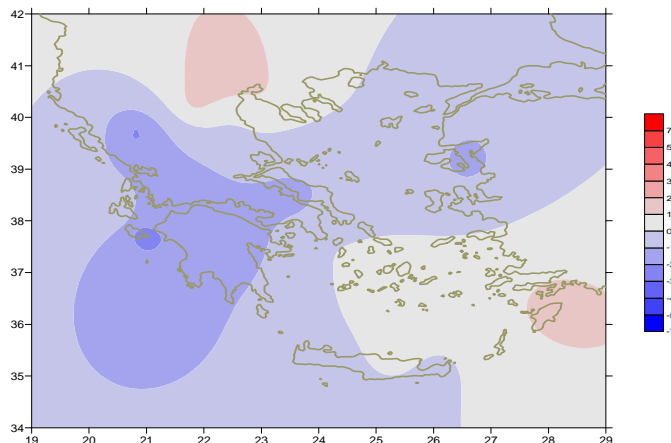
More specific (varied) :

Minimum:

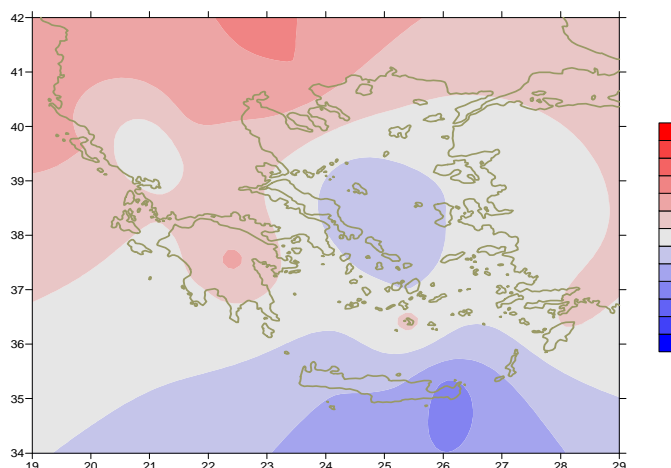
from -6°C to 4°C over north mainland,
 from -4°C to 9°C over central mainland,
 from -1°C to 14°C over rest parts.

Maximum:

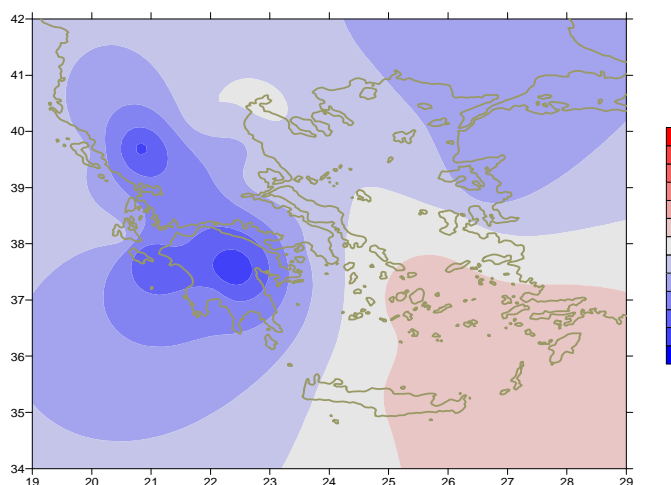
from -1.6°C to 17°C over north mainland,
 from 1°C to 20°C over central mainland,
 from 4°C to 20°C over rest parts.



Deviation of mean temperature from normal values



Deviation of maximum temperature from normal values



Deviation of minimum temperature from normal values



P r e c i p i t a t i o n

First Decameron

No significant precipitation

Second Decameron

Local rainfalls and very little thunderstorms.

More specific:

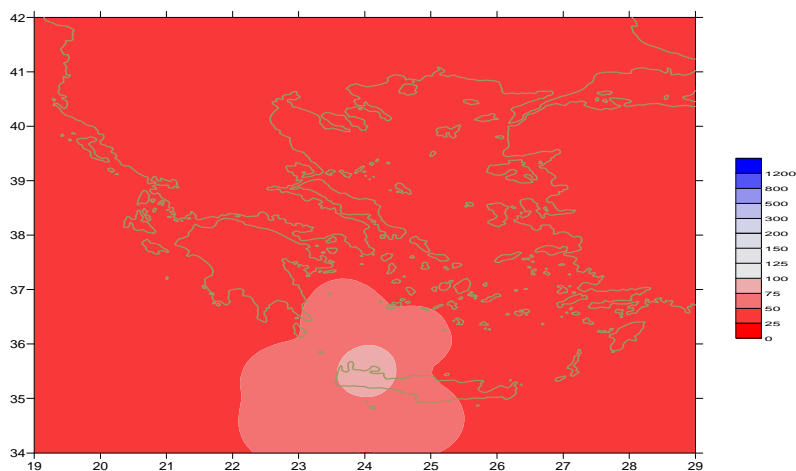
*22mm in Kalamata, 30mm in Methoni, 12mm in Argostoli,
17mm in Leonidio at 11/12,
9mm in Tanagra, 9mm in Syros at 12/12,
37mm in Souda, 7mm in Kasteli at 18/12.*

Third Decameron

Remarkable precipitation only during the period 29-31/12.

More specific:

*14mm in Aghialos, 7mm in Limnos, 8mm in Kalamata,
5mm in Kithira at 29/12,
7mm in Edessa, 10mm in Astros, 18mm in Leonidio,
23mm in Souda, 17mm in Kasteli,
16mm in Strofades at 31/12.*



*Deviation of monthly precipitation
height from normal values (%)*

TABLE OF MEAN VALUES

STATION	Longitude	Lattitude	Tmean	TX	TN	RR	INST
SERRES	23,53	41,07	5,6	12,1	0,2	1	180
FLORINA	21,40	40,78					
KASTORIA	21,27	40,45	3,8	11,4	-2,9	0	157
TRIKALA_IMATHIAS	22,55	40,60					
THESSALONIKI	22,97	40,52	7,8	13,4	3	0	190
CHRYSOUPOLI	24,62	40,92	7,3	13	2,6	0	197
ALEXANDROUPOLI	25,95	40,85	6,4	11,9	1,6	0	172
KOZANI	21,83	40,28	4,9	10,3	0,2	2	
KERKYRA	19,92	39,62	10,8	17,4	5,9	6	176
IOANNINA	20,82	39,70	3,6	11,5	-2,8	0	102
PREVEZA	20,76	38,91	10,3	15,7	7,5	5	
TRIKALA_THESSALIAS	21,77	39,52					
LARISA	22,45	39,65	5,8	12,2	0,3	5	147
LIMNOS	25,23	39,92	9	13,1	5,6	0	179
ARTA	21,00	39,17					
AGHIALOS	22,78	39,21	7,7	13,6	4,1	26	173
MYTILINI	26,60	39,05	10,1	14	6,9	0	200
VELO	22,77	37,97					
AGRINIO	21,35	38,60					
LAMIA	22,43	38,87					
ANDRAVIDA	21,28	37,92	9,8	16,5	4,4	0	198
SKYROS	24,48	38,96	11,1	13,3	9,2	5	116
ARGOSTOLI	20,50	38,12	12,7	17,3	9,4	13	203
ARAXOS	21,42	38,15	9,9	16,3	5,1	0	217
TANAGRA	23,57	38,33	7,8	13,9	4	16	147
HIOS	26,13	38,35	10,6	14,3	7,8	0	161
PYRGOS	21,42	37,67					
TRIPOLI	22,40	37,52	4,9	13,4	-2,4	8	167
TATOI	23,78	38,10	8,2	14	4,1	7	
HELLINIKO	23,73	37,90	11,9	15,5	8,2	0	191
ELEYSINA	23,55	38,07	10,6	15,5	6,7	0	
ZAKYNTHOS	20,88	37,75	10,5	16	5,6	10	166
SAMOS	26,92	37,68					
ARGOS	22,75	37,63					
KALAMATA	22,02	37,07	10,4	17,8	4,8	41	198
NAXOS	25,37	37,10	14,1	15,6	12,5	1	130
METHONI	21,70	36,82					
MHLOS	24,43	36,73					
SPATA	23,95	37,95	10,1	14,3	4,2	2	
KOS	27,08	36,80	12,6	15,1	10,6	0	
KYTHIRA	22,98	36,15					
SANTORINI	25,41	36,41	13,7	16,4	11,2	0	184
SOUDA	24,12	35,55	12,1	15,4	9,6	89	110
RODOS	28,08	36,40	14,7	17,7	12,2	4	206
MYKONOS	25,35	37,43	12,3	14,4	11,2	0	
HRAKLEIO	25,18	35,33	14	16,2	12,1	8	98
IERAPETRA	25,73	35,02					
SITEIA	26,10	35,21	13,8	14,9	12,3	14	146
RETHYMNO	24,50	35,36					
TYMPAKI	24,76	35,06					
KASTELI	25,33	35,18					
KARPATOS	27,15	35,42	15,2	17,8	13,6	6	
PAROS	25,13	37,02	13	15,5	11,2	0	186
SYROS	24,95	37,42	13,1	15,1	11,2	0	194
IKARIA	26,35	37,68					

TABLE OF DEVIATIONS
FROM NORMAL VALUES

STATION	TMEAN (deviation) (I)	PRECI (deviation %) (II)
SERRES	0.7	2
FLORINA		
THESSALONIKI	1.1	0
ALEXANDROUPOLI	-0.6	0
KOZANI	1.3	4
KERKYRA	-0.3	3
IOANNINA	-2.2	0
LARISA	-0.5	10
LIMNOS	-0.3	0
AGHIALOS	-0.3	41
MYTILINI	-1.2	0
AGRINIO		
SKYROS	-0.6	6
ARGOSTOLI	-0.2	10
ARAXOS	-1.6	0
HIOS	-0.5	0
HELLINIKO	-0.1	0
ZAKYNTHOS	-2.3	6
SAMOS		
KALAMATA	-1.2	27
NAXOS	0.4	2
METHONI		
SANTORINI	0.9	0
SOUDA	-0.5	95
RODOS	1.3	3
HERAKLIO	0.2	10
SITIA	-0.2	16

(I) deviation of mean temperature from normal values
(II) deviation of monthly precipitation height from normal values %.

Climatic Bulletin

General Description

Precipitation amounts varied very lower than normals over most parts. The mean temperature was lower than normal values, with the exception of south Aegean area and Creta island.

Climatic Parameters :

- ❖ **Normal Values** : normal values for various parameters (temperature, precipitation, etc) are defined as mean values calculated for 30 years. These normal values are used as basis and represent the mean situation. They can be specified in 10 daily, monthly, seasonally and yearly level and are used for the trend comparison of 10 days, month, season or year as: rainy decameron, mild winter, cool August etc.

Measurement :

- ❖ **Precipitation**
1 mm = 1 litre/m²

Table Legend :

Tmean : Mean Temperature
 TN : Minimum Temperature
 TX : Maximum Temperature
 RR : Precipitation height(mm)
 INST : Sun Duration (hours)

UTC hours (Universal Time Coordinates) in Greece :

- ❖ Winter : UTC hour = local hour - 2
- ❖ Summer : UTC hour = local hour - 3

© Hellenic National Meteorological Service
 Reproduction is prohibited without written authorization
 14 El.Venizelou 16777
 Helliniko, Athens
 Greece