




# Climatic Bulletin

March 2017

 **Max  
temperature**

 **Min  
temperature**

 **Mean  
temperature**

 **Precipitation**

 **Sunshine  
duration**

March started with soft weather but a period with strong rainfalls, thunderstorms and snowfalls over mountainous mainland followed that.

During last days the temperature declined rapidly, near gale force north winds prevailed and remarkable precipitation recorded over Aegean area.



ΕΘΝΙΚΗ  
**ΜΕΤΕΩΡΟΛΟΓΙΚΗ**  
ΥΠΗΡΕΣΙΑ

HELLENIC NATIONAL METEOROLOGICAL SERVICE



# Temperature

### First 10-day period

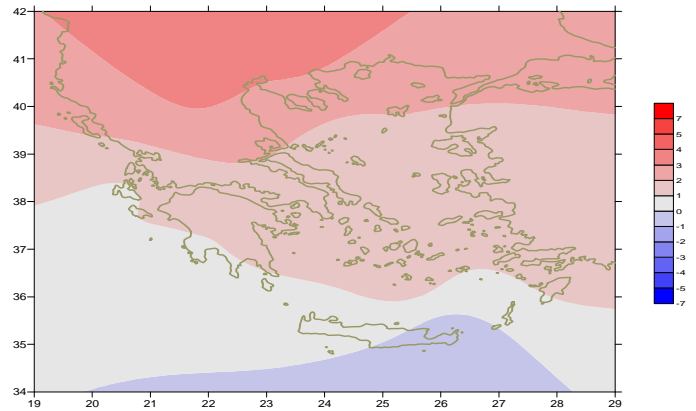
More specific (varied) :

**Minimum:**

from  $-3^{\circ}\text{C}$  to  $11^{\circ}\text{C}$  over north mainland,  
 from  $-1^{\circ}\text{C}$  to  $11^{\circ}\text{C}$  over central mainland,  
 from  $2^{\circ}\text{C}$  to  $14^{\circ}\text{C}$  over rest parts.

**Maximum:**

from  $8^{\circ}\text{C}$  to  $20^{\circ}\text{C}$  over north mainland,  
 from  $11^{\circ}\text{C}$  to  $21^{\circ}\text{C}$  over central mainland,  
 from  $13^{\circ}\text{C}$  to  $21^{\circ}\text{C}$  over rest parts.



*Deviation of mean temperature from normal values*

### Second 10-day period

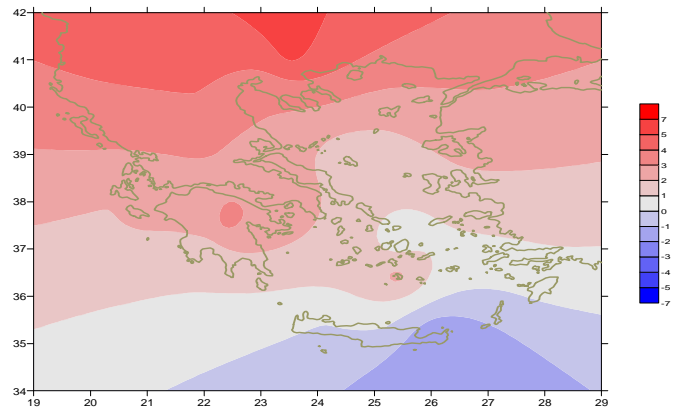
More specific (varied) :

**Minimum:**

from  $-3^{\circ}\text{C}$  to  $10^{\circ}\text{C}$  over north mainland,  
 from  $1^{\circ}\text{C}$  to  $11^{\circ}\text{C}$  over central mainland,  
 from  $2^{\circ}\text{C}$  to  $13^{\circ}\text{C}$  over rest parts.

**Maximum:**

from  $8^{\circ}\text{C}$  to  $26^{\circ}\text{C}$  over north mainland,  
 from  $9^{\circ}\text{C}$  to  $23^{\circ}\text{C}$  over central mainland,  
 from  $12^{\circ}\text{C}$  to  $22^{\circ}\text{C}$  over rest parts.



*Deviation of maximum temperature from normal values*

### Third 10-day period

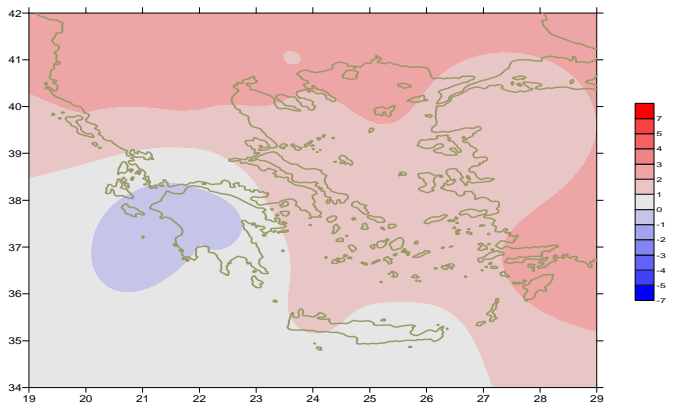
More specific (varied) :

**Minimum:**

from  $-1^{\circ}\text{C}$  to  $9^{\circ}\text{C}$  over north mainland,  
 From  $0^{\circ}\text{C}$  to  $15^{\circ}\text{C}$  over central mainland,  
 from  $5^{\circ}\text{C}$  to  $14^{\circ}\text{C}$  over rest parts.

**Maximum:**

from  $8^{\circ}\text{C}$  to  $26^{\circ}\text{C}$  over north mainland,  
 from  $12^{\circ}\text{C}$  to  $25^{\circ}\text{C}$  over central mainland,  
 From  $11^{\circ}\text{C}$  to  $22^{\circ}\text{C}$  over rest parts.



*Deviation of minimum temperature from normal values*



## P r e c i p i t a t i o n

### First 10-day period

Remarkable local precipitation.

More specific:

*15mm in Konitsa, 13mm in Preveza (6/3),  
28mm in Kastoria, 21mm in Edessa, 18mm in Chryssoupoli,  
84mm in Mitilini, 35mm in Chios, 27mm in Zakynthos,  
25mm in Kalamata, 20mm in Naxos, 25mm in Kos, 32mm in Rodos,  
20mm in Souda (8/3),  
21mm in Skyros, 31mm in Tanagra, 32mm in Tatoi,  
28mm in Hellinikon, 15mm in Elefsina, 57mm in Kos, 35mm in Mykonos (9/3),  
24mm in Kerkyra, 15mm in Thessaloniki, 26mm in Rodos (10/3).*

### Second 10-day period

Significant local precipitation.

More specific:

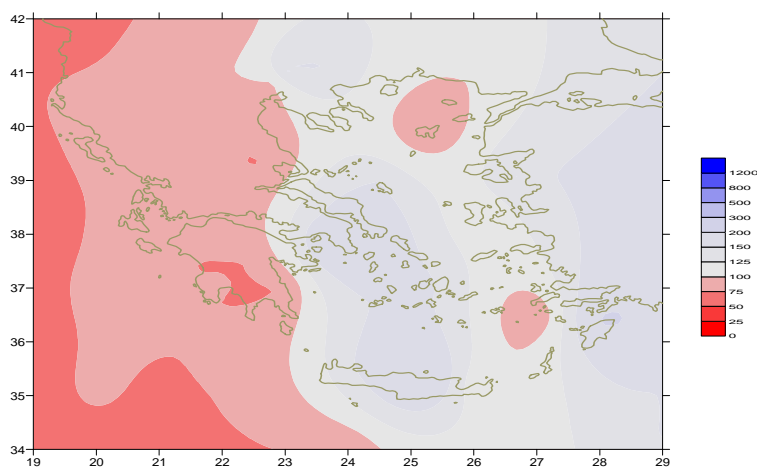
*29mm in Skiathos, 22mm in Argostoli, 27mm in Tanagra,  
38mm in Tatoi, 40mm in Hellinikon, 27mm in Rodos,  
17mm in Iraklion, 22mm in Kasteli (11/3),  
23mm in Santorini, 34mm in Souda,  
18mm in Paros, 24mm in Rodos, 19mm in Kastelorizo (12/3).*

### Third 10-day period

Significant precipitation locally at the end of the period.

More specific:

*16mm in Santorini, 17mm in Iraklion,  
24mm in Karpachos, 38mm in Kasos (30/3),  
16mm in Kasteli, 14mm in Kastelorizo (31/3).*



***Deviation of monthly precipitation  
height from normal values (%)***

TABLE OF MEAN VALUES

STATION	Longitude	Latitude	Tmean	TX	TN	RR	INST
SERRES	23,53	41,07	13.1	20	6.1	36	196
FLORINA	21,40	40,78					
KASTORIA	21,27	40,45	10	16.2	2.7	26	205
TRIKALA_IMATHIAS	22,55	40,60					
THESSALONIKI	22,97	40,52	12.6	17.6	6.8	40	212
CHRYSOUPOLI	24,62	40,92	11.4	15.6	6.7	60	192
ALEXANDROUPOLI	25,95	40,85					
KOZANI	21,83	40,28	10.4	15.5	4.4	39	
KERKYRA	19,92	39,62	14.3	19.7	8.7	43	247
IOANNINA	20,82	39,70					
PREVEZA	20,76	38,91	14	18.2	8.7	39	
TRIKALA_THESSALIAS	21,77	39,52					
LARISA	22,45	39,65	12	18.4	4.9	19	200
LIMNOS	25,23	39,92	12	15.3	8.5	23	201
ARTA	21,00	39,17					
AGHIALOS	22,78	39,21	12.1	17.1	6.3	28	201
MYTILINI	26,60	39,05	13.3	17.2	9.3	110	218
VELO	22,77	37,97					
AGRINIO	21,35	38,60					
LAMIA	22,43	38,87					
ANDRAVIDA	21,28	37,92	13.3	18.1	7.4	21	232
SKYROS	24,48	38,96	12.8	15.5	10.1	66	193
ARGOSTOLI	20,50	38,12	13.8	18	9.8	52	250
ARAXOS	21,42	38,15	13.6	18.5	7.3	15	239
TANAGRA	23,57	38,33	12.2	17.4	6.3	72	203
HIOS	26,13	38,35	13.1	16.3	9	65	214
PYRGOS	21,42	37,67					
TRIPOLI	22,40	37,52	9.7	16.2	1.9	44	199
TATOI	23,78	38,10	12.1	16.9	6.4	77	
HELLINIKO	23,73	37,90	14.2	18.2	10.3	69	202
ELEYSINA	23,55	38,07	14.1	18.9	8.6	22	
ZAKYNTHOS	20,88	37,75	14	18.4	8.8	52	246
SAMOS	26,92	37,68					
ARGOS	22,75	37,63					
KALAMATA	22,02	37,07	13.2	18.9	6.8	40	227
NAXOS	25,37	37,10	14.3	16.3	11.7	60	225
METHONI	21,70	36,82					
MHLOS	24,43	36,73					
SPATA	23,95	37,95					
KOS	27,08	36,80	13.8	16.7	11.2	140	
KYTHIRA	22,98	36,15					
SANTORINI	25,41	36,41	14.6	17.3	11.7	66	218
SOUDA	24,12	35,55	13.1	16.7	9.9	118	195
RODOS	28,08	36,40	15	17.5	12.5	156	225
MYKONOS	25,35	37,43	13.2	15.9	11.2	51	
HRAKLEIO	25,18	35,33	13.8	16.8	10.3	98	186
IERAPETRA	25,73	35,02					
SITEIA	26,10	35,21	13	15.1	10.8	31	163
RETHYMNO	24,50	35,36					
TYMPAKI	24,76	35,06					
KASTEI	25,33	35,18	11.5	16.5	6.8	98	188
KARPATOS	27,15	35,42	15.3	17.6	13.6	47	
PAROS	25,13	37,02	13.9	16.6	10.8	50	211
SYROS	24,95	37,42					
IKARIA	26,35	37,68					

**TABLE OF DEVIATIONS  
FROM NORMAL VALUES**

STATION	TMEAN ( deviation ) (I)	PRECI ( deviation % ) (II)
SERRES	3.4	109
FLORINA		
THESSALONIKI	3	88
ALEXANDROUPOLI		
KOZANI	3.4	93
KERKYRA	2.2	44
IOANNINA		
LARISA	2.5	52
LIMNOS	2.1	45
AGHIALOS	2.1	54
MYTILINI	1.5	147
AGRINIO		
SKYROS	1.1	128
ARGOSTOLI	0.7	63
ARAXOS	1.3	25
HIOS	1.3	88
HELLINIKO	1.8	156
ZAKYNTHOS	1.1	58
SAMOS		
KALAMATA	0.8	56
NAXOS	1	121
METHONI		
SANTORINI	1.9	110
SOUDA	0.5	146
RODOS	1.4	207
HERAKLIO	0.2	171
SITIA	-0.8	55

(I) deviation of mean temperature from normal values  
 (II) deviation of monthly precipitation height from normal values %.

# Climatic Bulletin

## General Description

Precipitation amounts were lower enough than normals over most parts of western Greece while they were higher enough over East Sterea, Evia and Creta.  
The mean temperature varied higher than normal values almost everywhere.

### Climatic Parameters :

- ❖ **Normal Values** : normal values for various parameters (temperature, precipitation, etc) are defined as mean values calculated for 30 years. These normal values are used as basis and represent the mean situation. They can be specified in 10 daily, monthly, seasonally and yearly level and are used for the trend comparison of 10 days, month, season or year as: rainy decameron, mild winter, cool August etc.

### Measurement :

- ❖ **Precipitation**  
1 mm = 1 litre/m<sup>2</sup>

### Table Legend :

Tmean : Mean Temperature  
TN : Minimum Temperature  
TX : Maximum Temperature  
RR : Precipitation height(mm)  
INST : Sun Duration (hours)

### UTC hours (Universal Time Coordinates) in Greece :

- ❖ Winter : UTC hour = local hour - 2
- ❖ Summer : UTC hour = local hour - 3

© Hellenic National Meteorological Service  
Reproduction is prohibited without written authorization  
14 El.Venizelou 16777  
Helliniko, Athens  
Greece