




Climatic Bulletin

April 2017

 **Max
temperature**

 **Min
temperature**

 **Mean
temperature**

 **Precipitation**

 **Sunshine
duration**

April started with soft weather but a few periods with significant rainfalls, thunderstorms and snowfalls over mainland followed that. Also on the 22th of month frost conditions prevailed over mountainous and semi-mountainous areas of Peloponnese.



Temperature

First 10-day period

More specific (varied) :

Minimum:

from -1°C to 12°C over north mainland,
 from 1°C to 12°C over central mainland,
 from 5°C to 15°C over rest parts.

Maximum:

from 12°C to 24°C over north mainland,
 from 13°C to 20°C over central mainland,
 from 15°C to 22°C over rest parts.

Second 10-day period

More specific (varied) :

Minimum:

from -1°C to 12°C over north mainland,
 from 3°C to 16°C over central mainland,
 from 5°C to 18°C over rest parts.

Maximum:

from 12°C to 26°C over north mainland,
 from 14°C to 26°C over central mainland,
 from 17°C to 28°C over rest parts.

Third 10-day period

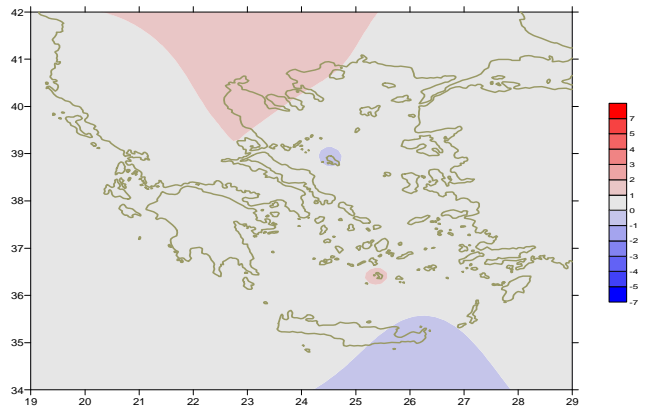
More specific (varied) :

Minimum:

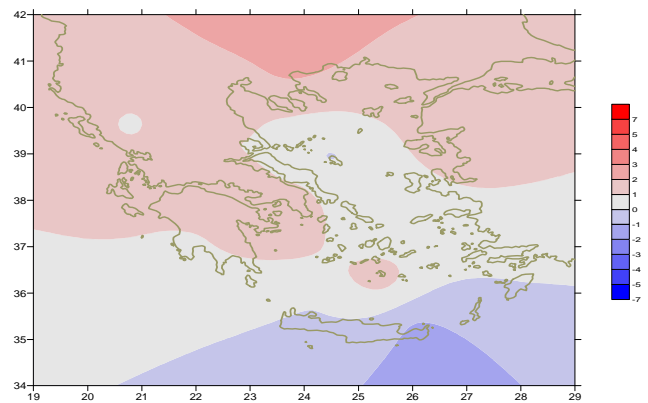
from -4°C to 15°C over north mainland,
 From 1°C to 17°C over central mainland,
 from 3°C to 20°C over rest parts.

Maximum:

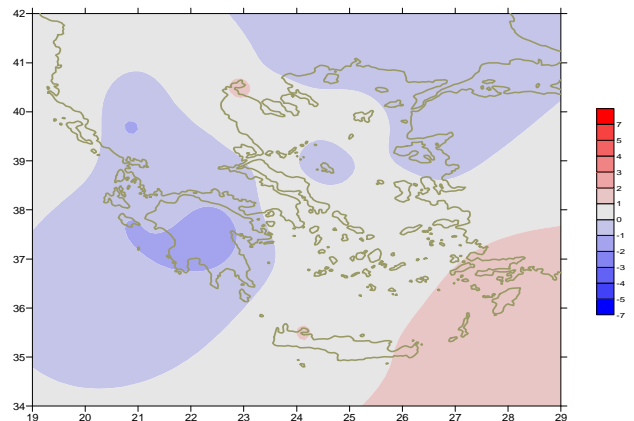
from 9°C to 30°C over north mainland,
 from 12°C to 32°C over central mainland,
 From 13°C to 28°C over rest parts.



Deviation of mean temperature from normal values



Deviation of maximum temperature from normal values



Deviation of minimum temperature from normal values



P r e c i p i t a t i o n

First 10-day period

Remarkable local precipitation.

More specific:

15mm in Karpathos (1 /4),
 13mm in Preveza, 18mm in Kerkyra, 21mm in Zakynthos,
 15mm in Argostoli, 9mm in Araxos (3 /4),
 18mm in Kerkyra (4/4),
 17mm in Kozani,
 7mm in Adravida, 5mm in Argos (5/4),
 7mm in Souda (6/4),
 11mm in Alexandroupoli, 6mm in Elefsina (7/4),
 6mm in Mitilini, 4mm in Santorini (8/4).

Second 10-day period

Significant local precipitation.

More specific:

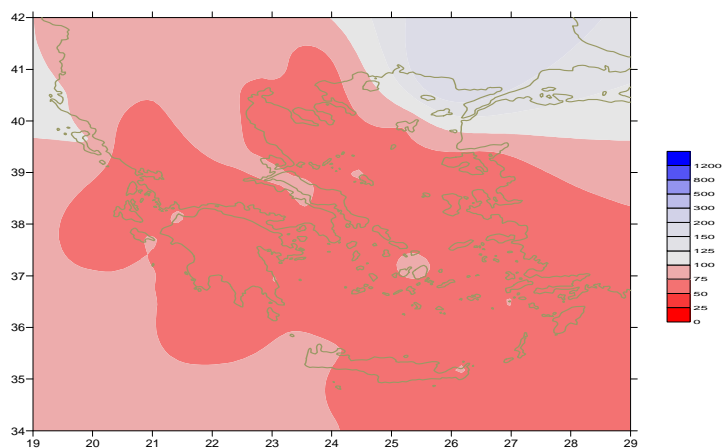
8mm in Konitsa, 6mm in Iraklio, 6mm in Sitia (12/4),
 17mm in Kastelorizo (13 /4),
 9mm in Serres, 11mm in Chrisoupoli, 25mm in Alexandroupoli,
 11mm in Tanagra, 16mm in Ioannina, 18mm in Limnos,
 12mm in Aghialos, 16mm in Araxos, 9mm in Naxos (17/4).
 9mm in Alexandroupoli, 9mm in Larisa, 9mm in Samos,
 8mm in Kastelorizo (18/4),
 12mm in Edessa (19/4).

Third 10-day period

Significant precipitation locally at the end of the period.

More specific:

7mm in Adravida, 8mm in Zakynthos, 10mm in Iraklion,
 16mm in Souda, 7mm in Kasteli, 7mm in Samos (21/4).



*Deviation of monthly precipitation
 height from normal values (%)*

TABLE OF MEAN VALUES

STATION	Longitude	Latitude	Tmean	TX	TN	RR	INST
SERRES	23,53	41,07	15,7	22,7	7,4	12	210
FLORINA	21,40	40,78					
KASTORIA	21,27	40,45	12,5	19,1	3,5	8	225
TRIKALA_IMATHIAS	22,55	40,60					
THESSALONIKI	22,97	40,52	15,7	20,3	8,6	7	264
CHRYSOUPOLI	24,62	40,92	13,9	17,8	7,9	24	246
ALEXANDROUPOLI	25,95	40,85	13,9	18,8	6,4	52	250
KOZANI	21,83	40,28	12,9	18,2	5,6	24	
KERKYRA	19,92	39,62	16	20,4	10,2	44	296
IOANNINA	20,82	39,70	12,7	19	4,8	28	199
PREVEZA	20,76	38,91	16,1	20	10,2	23	
TRIKALA_THESSALIAS	21,77	39,52					
LARISA	22,45	39,65	15	21,5	6,4	22	275
LIMNOS	25,23	39,92	14,6	18,4	9,2	20	291
ARTA	21,00	39,17					
AGHIALOS	22,78	39,21	15,2	20	7,7	21	292
MYTILINI	26,60	39,05	16,3	20,9	11	12	265
VELO	22,77	37,97					
AGRINIO	21,35	38,60					
LAMIA	22,43	38,87					
ANDRAVIDA	21,28	37,92	15,8	20,3	9,2	35	279
SKYROS	24,48	38,96	15	17,8	11,3	10	280
ARGOSTOLI	20,50	38,12	16	19,7	11,2	16	297
ARAXOS	21,42	38,15	16,2	20,5	9,5	32	281
TANAGRA	23,57	38,33	15,4	20,7	7,5	21	277
HIOS	26,13	38,35	16	19,3	10,3	6	248
PYRGOS	21,42	37,67					
TRIPOLI	22,40	37,52	12,5	18,8	3,2	14	253
TATOI	23,78	38,10	15,3	20,3	7,7	4	
HELLINIKO	23,73	37,90	17	21,2	12,2	4	205
ELEYSINA	23,55	38,07	17,3	21,8	10,3	12	
ZAKYNTHOS	20,88	37,75	16,1	20,1	10	29	302
SAMOS	26,92	37,68					
ARGOS	22,75	37,63					
KALAMATA	22,02	37,07	15,5	20,9	7,8	9	258
NAXOS	25,37	37,10	16,5	18,8	12,7	15	251
METHONI	21,70	36,82					
MHLOS	24,43	36,73					
SPATA	23,95	37,95	16	19,9	8,2		
KOS	27,08	36,80	16,2	19,4	12,9	8	
KYTHIRA	22,98	36,15					
SANTORINI	25,41	36,41	16,8	19,9	13	9	251
SOUDA	24,12	35,55	16,3	19,9	12,2	22	275
RODOS	28,08	36,40	17,5	20,3	14,3	6	277
MYKONOS	25,35	37,43	15,9	18,8	12,9	6	
HRAKLEIO	25,18	35,33	16,8	20	12,4	16	249
IERAPETRA	25,73	35,02					
SITEIA	26,10	35,21	16,4	19	13,7	16	252
RETHYMNO	24,50	35,36					
TYMPAKI	24,76	35,06					
KASTELI	25,33	35,18	14,9	19,6	8,8	8	242
KARPATHOS	27,15	35,42	17,4	20,1	15,2	16	
PAROS	25,13	37,02	16,1	19	12,7	7	227
SYROS	24,95	37,42					
IKARIA	26,35	37,68					

**TABLE OF DEVIATIONS
FROM NORMAL VALUES**

STATION	TMEAN (deviation) (I)	PRECI (deviation %) (II)
SERRES	1.4	34
FLORINA		
THESSALONIKI	1.5	19
ALEXANDROUPOLI	0.7	131
KOZANI	1	60
KERKYRA	0.9	71
IOANNINA	0.1	37
LARISA	1	76
LIMNOS	0.8	62
AGHIALOS	1	61
MYTILINI	0.5	26
AGRINIO		
SKYROS	-0.2	46
ARGOSTOLI	0.6	27
ARAXOS	0.8	77
HIOS	0.7	15
HELLINIKO	1	16
ZAKYNTHOS	0.6	57
SAMOS		
KALAMATA	0.1	19
NAXOS	0.4	82
METHONI		
SANTORINI	1.2	47
SOUDA	0.5	69
RODOS	0.8	25
HERAKLIO	0.2	53
SITIA	-0.4	58

(I) deviation of mean temperature from normal values
(II) deviation of monthly precipitation height from normal values %.

Climatic Bulletin

General Description

Precipitation amounts were lower enough than normals over most parts with exception of Thrace.
The mean temperature varied higher than normal values almost everywhere.

Climatic Parameters :

- ❖ **Normal Values** : normal values for various parameters (temperature, precipitation, etc) are defined as mean values calculated for 30 years. These normal values are used as basis and represent the mean situation. They can be specified in 10 daily, monthly, seasonally and yearly level and are used for the trend comparison of 10 days, month, season or year as: rainy decameron, mild winter, cool August etc.

Measurement :

- ❖ **Precipitation**
1 mm = 1 litre/m²

Table Legend :

Tmean : Mean Temperature
TN : Minimum Temperature
TX : Maximum Temperature
RR : Precipitation height(mm)
INST : Sun Duration (hours)

UTC hours (Universal Time Coordinates) in Greece :

- ❖ Winter : UTC hour = local hour - 2
- ❖ Summer : UTC hour = local hour - 3

© Hellenic National Meteorological Service
Reproduction is prohibited without written authorization
14 El.Venizelou 16777
Helliniko, Athens
Greece