



Climatic Bulletin

December 2017

 **Max
temperature**

 **Min
temperature**

 **Mean
temperature**

 **Precipitation**

 **Sunshine
duration**

December characterized by long lasting heavy rainfalls and thunderstorms over west parts (mainly over Epirus and west Sterea) at the beginning.

Also remarkable snowfalls recorded over mountainous and semi-mountainous regions of central and south mainland. Afterwards significant precipitation affected the southern parts of Aegean area (24-26/12) while strong gale force northern winds prevailed between 22-23/12.



ΕΘΝΙΚΗ
ΜΕΤΕΩΡΟΛΟΓΙΚΗ
ΥΠΗΡΕΣΙΑ

HELLENIC NATIONAL METEOROLOGICAL SERVICE



Temperature

First 10-day period

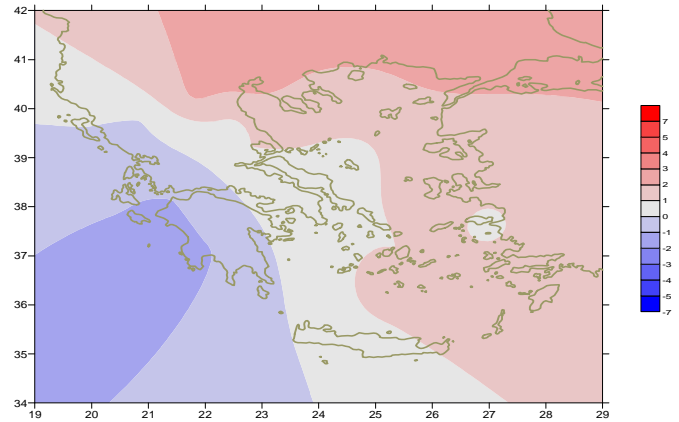
More specific (varied) :

Minimum:

from -7°C to 16°C over north mainland,
 from -4°C to 18°C over central mainland,
 from -3°C to 18°C over rest parts.

Maximum:

from 7°C to 19°C over north mainland,
 from 9°C to 21°C over central mainland,
 from 10°C to 23°C over rest parts.



Deviation of mean temperature from normal values

Second 10-day period

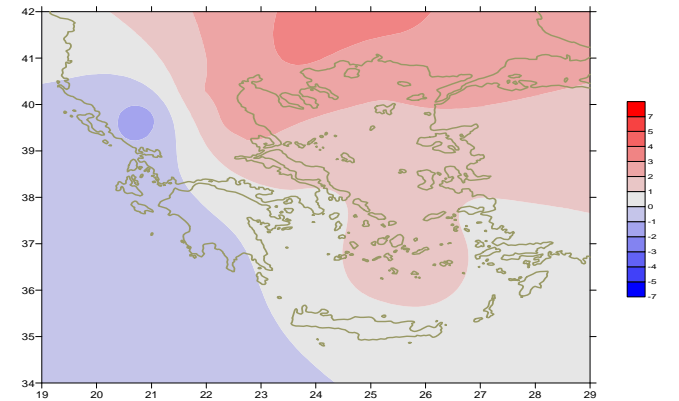
More specific (varied) :

Minimum:

from -8°C to 13°C over north mainland,
 from -3°C to 16°C over central mainland,
 from 3°C to 17°C over rest parts.

Maximum:

from 9°C to 17°C over north mainland,
 from 13°C to 21°C over central mainland,
 from 15°C to 22°C over rest parts.



Deviation of maximum temperature from normal values

Third 10-day period

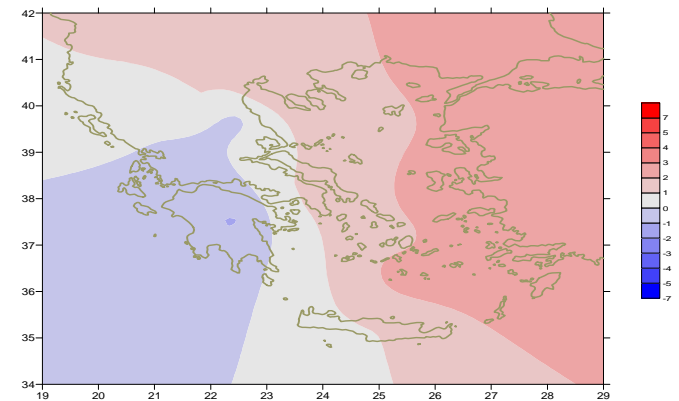
More specific (varied) :

Minimum:

from -8°C to 12°C over north mainland,
 From -4°C to 14°C over central mainland,
 from 3°C to 13°C over rest parts.

Maximum:

from -2°C to 16°C over north mainland,
 from 3°C to 17°C over central mainland,
 From 6°C to 19°C over rest parts.



Deviation of minimum temperature from normal values



Precipitation

First 10-day period

Locally significant precipitation.

More specific:

*29mm in Kastoria, 55mm in Kerkira, 32mm in Preveza (1/12),
27mm in Florina, 33mm in Kastoria, 27mm in Thessaloniki, 28mm in Ioannina,
39mm in Preveza, 38mm in Larisa, 23mm in Argostoli (2/12),
18mm in Kastelorizo (6/12), 13mm in Rodos (9/12),
19mm in Samos, 17mm in Kalamata (10/12).*

Second 10-day period

Temporal significant precipitation.

More specific:

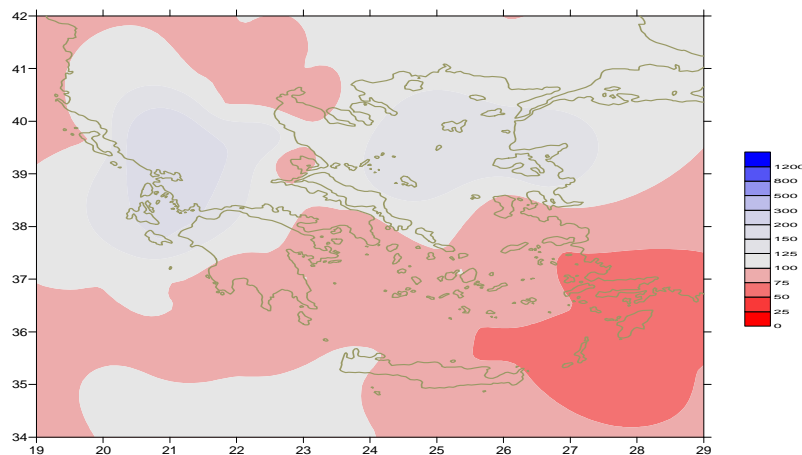
*19mm in Konitsa, 49mm in Andravida, 42mm in Argostoli (16/12),
20mm in Chrissoupoli, 45mm in Alexandroupoli, 47mm in Andravida,
26mm in Araxos, 47mm in Zakynthos, 14mm in Kalamata (17/12),
29mm in Limnos (19/12).*

Third 10-day period

Locally significant precipitation.

More specific:

*27mm in Adravida, 30mm in Araxos, 39mm in Zakynthos (21/12),
44mm in Tanagra, 52mm in Zakynthos, 35mm in Tripoli,
20mm in Santorini, 34mm in Adravida, 17mm in Naxos (22/12),
47mm in Souda, 37mm in Kasteli (23/12),
16mm in Samos (27/12),
30mm in Kerkira, 53mm in Ioannina, 36mm in Zakynthos (28/12),
46mm in Mitilini, 32mm in Kerkira, 24mm in Limnos,
21mm in Kalamata (29/12),
42mm in Mitilini, 39mm in Samos, 28mm in Naxos,
18mm in Chios, 15mm in Kasos (30/12).*



Deviation of monthly precipitation height from normal values (%)

TABLE OF MEAN VALUES

STATION	Longitude	Latitude	Tmean	TX	TN	RR	INST
SERRES	23,53	41,07	7,1	12,4	2	34	147
FLORINA	21,40	40,78					
KASTORIA	21,27	40,45	4,6	9,8	-0,2	79	113
TRIKALA_IMATHIAS	22,55	40,60					
THESSALONIKI	22,97	40,52	9	13	4,5	27	170
CHRYSOUPOLI	24,62	40,92	8,2	13	3,7	66	143
ALEXANDROUPOLI	25,95	40,85	9,4	13,5	6	81	152
KOZANI	21,83	40,28	5,8	9,7	1,2	41	
KERKYRA	19,92	39,62	11,1	15,1	7,4	159	113
IOANNINA	20,82	39,70	5,7	9,8	1,8	210	72
PREVEZA	20,76	38,91	10,4	14	7,9	169	
TRIKALA_THESSALIAS	21,77	39,52					
LARISA	22,45	39,65	7	13,2	1,5	60	143
LIMNOS	25,23	39,92	10,6	14,3	7,8	120	153
ARTA	21,00	39,17					
AGHIALOS	22,78	39,21	9	14,4	5	31	179
MYTILINI	26,60	39,05	12,7	15,3	10,8	151	128
VELO	22,77	37,97					
AGRINIO	21,35	38,60					
LAMIA	22,43	38,87					
ANDRAVIDA	21,28	37,92	10,9	15,1	8,1	200	112
SKYROS	24,48	38,96	12,4	15,2	10,4	107	126
ARGOSTOLI	20,50	38,12	12,1	15,4	9,5	178	136
ARAXOS	21,42	38,15	10,5	15	7,3	147	144
TANAGRA	23,57	38,33	10	14,8	6	67	154
HIOS	26,13	38,35	12,7	15,5	10,3	82	113
PYRGOS	21,42	37,67					
TRIPOLI	22,40	37,52	6,2	11,2	1,7	109	127
TATOI	23,78	38,10					
HELLINIKO	23,73	37,90	12,6	15,9	10	27	
ELEYSINA	23,55	38,07	11,1	15,5	7,8	27	
ZAKYNTHOS	20,88	37,75	11,5	15,2	8,7	196	138
SAMOS	26,92	37,68	12,9	15,9	10,6	110	
ARGOS	22,75	37,63					
KALAMATA	22,02	37,07	10,5	16,3	6,5	109	130
NAXOS	25,37	37,10	14,7	17,1	12,6	60	115
METHONI	21,70	36,82					
MHLOS	24,43	36,73					
SPATA	23,95	37,95	11,7	15,5	7,2	49	
KOS	27,08	36,80	13,5	16	11,5	30	
KYTHIRA	22,98	36,15					
SANTORINI	25,41	36,41	14,7	16,9	12,7	36	156
SOUDA	24,12	35,55	13	16,6	10,2	76	153
RODOS	28,08	36,40	14,9	17,2	12,9	34	147
MYKONOS	25,35	37,43	13,3	15,5	12,1	42	
HRAKLEIO	25,18	35,33	14,5	17,5	12	57	132
IERAPETRA	25,73	35,02					
SITEIA	26,10	35,21					
RETHYMNO	24,50	35,36					
TYMPAKI	24,76	35,06					
KASTELI	25,33	35,18	11,8	15,1	8,5	97	152
KARPATOS	27,15	35,42	15,5	18	13,3	12	
PAROS	25,13	37,02					
SYROS	24,95	37,42					
IKARIA	26,35	37,68					

**TABLE OF DEVIATIONS
FROM NORMAL VALUES**

STATION	TMEAN (deviation)	PRECI (deviation %)
	(I)	(II)
SERRES	2.2	78
FLORINA		
THESSALONIKI	2.3	51
ALEXANDROUPOLI	2.4	93
KOZANI	2.2	75
KERKYRA	0	88
IOANNINA	-0.1	122
LARISA	0.7	115
LIMNOS	1.3	150
AGHIALOS	1	49
MYTILINI	1.4	104
AGRINIO		
SKYROS	0.7	137
ARGOSTOLI	-0.8	142
ARAXOS	-1	112
HIOS	1.6	71
HELLINIKO	0.6	41
ZAKYNTHOS	-1.3	115
SAMOS	0.8	67
KALAMATA	-1.1	71
NAXOS	1	87
METHONI		
SANTORINI	1.9	59
SOUDA	0.4	81
RODOS	1.5	23
HERAKLIO	0.7	74
SITIA	1.1	56

(I) deviation of mean temperature from normal values
 (II) deviation of monthly precipitation height from normal values %.

Climatic Bulletin

General Description

Precipitation amounts were higher enough than normals over Ipirus and partly over Peloponnese while they were lower enough over south Aegean area.
The mean temperature varied higher than normal values over most parts.

Climatic Parameters :

- ❖ **Normal Values** : normal values for various parameters (temperature, precipitation, etc) are defined as mean values calculated for 30 years. These normal values are used as basis and represent the mean situation. They can be specified in 10 daily, monthly, seasonally and yearly level and are used for the trend comparison of 10 days, month, season or year as: rainy decameron, mild winter, cool August etc.

Measurement :

- ❖ **Precipitation**
1 mm = 1 litre/m²

Table Legend :

Tmean : Mean Temperature
TN : Minimum Temperature
TX : Maximum Temperature
RR : Precipitation height(mm)
INST : Sun Duration (hours)

UTC hours (Universal Time Coordinates) in Greece :

- ❖ Winter : UTC hour = local hour - 2
- ❖ Summer : UTC hour = local hour - 3

© Hellenic National Meteorological Service
Reproduction is prohibited without written authorization
14 El.Venizelou 16777
Helliniko, Athens
Greece