




Climatic Bulletin

February 2018

 **Max
temperature**

 **Min
temperature**

 **Mean
temperature**

 **Precipitation**

 **Sunshine
duration**

February characterized by periods of strong rainfalls which affected mainly the mountainous areas of Ipirus and Thessaly while few rivers overflowed their banks. During last days heavy snowfalls recorded over northern mainland not only over mountains but over flat areas of west Macedonia as well.



ΕΘΝΙΚΗ
ΜΕΤΕΩΡΟΛΟΓΙΚΗ
ΥΠΗΡΕΣΙΑ

HELLENIC NATIONAL METEOROLOGICAL SERVICE



Temperature

First 10-day period

More specific (varied) :

Minimum:

from -5°C to 13°C over north mainland,
 from -2°C to 14°C over central mainland,
 from $+2^{\circ}\text{C}$ to 15°C over rest parts.

Maximum:

from 5°C to 18°C over north mainland,
 from 9°C to 21°C over central mainland,
 from 13°C to 22°C over rest parts.

Second 10-day period

More specific (varied) :

Minimum:

from -5°C to 8°C over north mainland,
 from -3°C to 10°C over central mainland,
 from 0°C to 13°C over rest parts.

Maximum:

from 3°C to 14°C over north mainland,
 from 6°C to 16°C over central mainland,
 from 9°C to 19°C over rest parts.

Third 10-day period

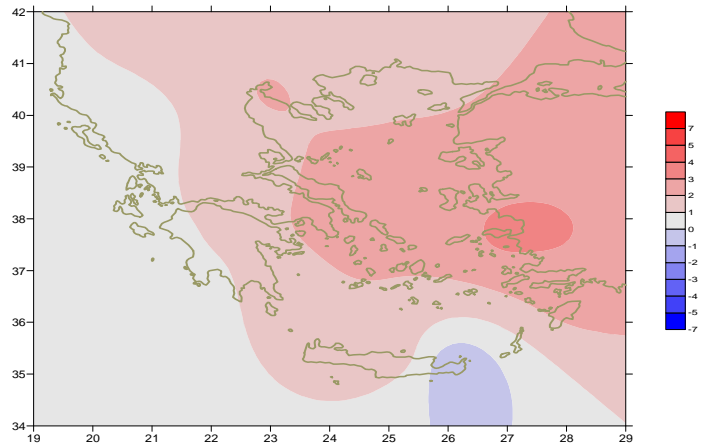
More specific (varied) :

Minimum:

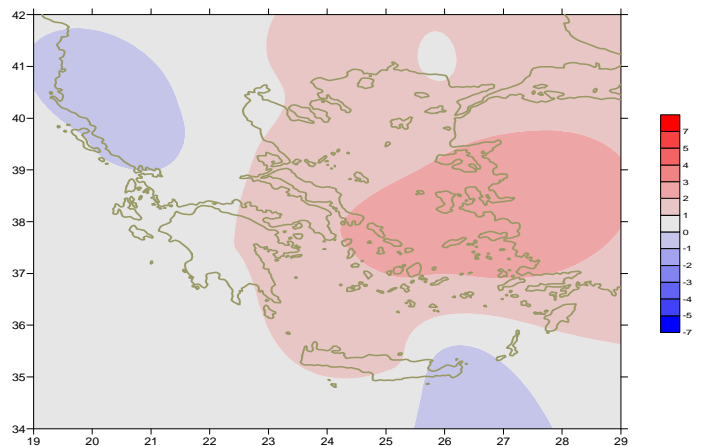
from -6°C to 8°C over north mainland,
 From 0°C to 11°C over central mainland,
 from 3°C to 13°C over rest parts.

Maximum:

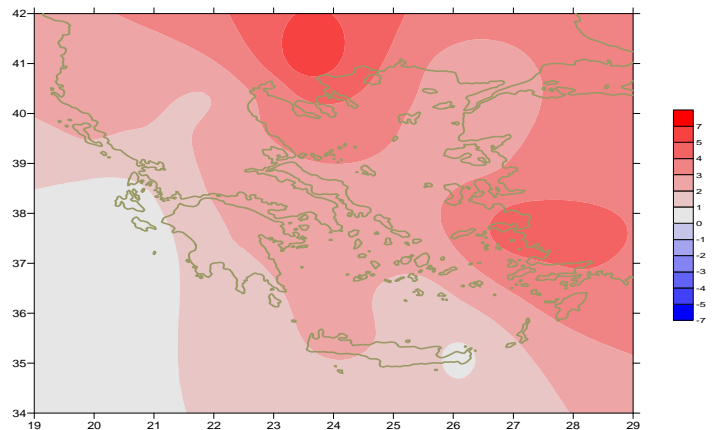
from -2°C to 15°C over north mainland,
 from 6°C to 20°C over central mainland,
 From 11°C to 18°C over rest parts.



Deviation of mean temperature from normal values



Deviation of maximum temperature from normal values



Deviation of minimum temperature from normal values



Precipitation

First 10-day period

Remarkable precipitation over most parts.

More specific:

47mm in Kerkira, 44mm in Ioannina, 43mm in Konitsa, 28mm in Preveza (3/2),
47mm in Kerkira, 39mm in Ioannina, 21mm in Adravida, 21mm in Araxos,
19mm in Florina (4/2),
33mm in Larisa, 32mm in Preveza, 41mm in Aghialos, 40mm in Lamia,
39mm in Argostoli, 24mm in Tripoli, 51mm in Zakynthos, 36mm in Tithorea,
26mm in Antorio, 24mm in Kimi (10/2).

Second 10-day period

Significant precipitation almost everywhere.

More specific:

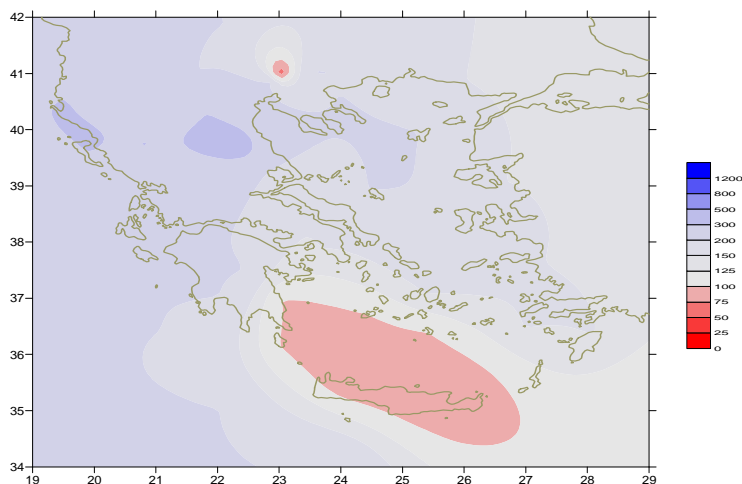
23mm in Chrissoupoli, 38mm in Doxato (11 /2),
45mm in Kerkira, 28mm in Fourni (12/1),
25mm in Tripoli (14/2), 35mm in Skiathos, 34mm in Aghialos,
30mm in Lamia, 26mm in Adravida, 27mm in Chios, 22mm in Elefsina,
27mm in Zakynthos, 40mm in Oreoi, 22mm in Psara (15/2),
41mm in Souda, 61mm in Rodos, 68mm in Oreoi (16/2),
14mm in Kasteli (17/2),
27mm in Astros, 23mm in Tripoli, 31mm in Zakynthos,
21mm in Kalamata (20/2).

Third 10-day period

Significant precipitation over most parts and remarkable snowfalls over west Macedonia between 25-28/2.

More specific:

40mm in Argostoli, 33mm in Kos (21 /2),
37mm in Chios, 22mm in Samos, 40mm in Kerkira, 39mm in Ioannina, 21mm in Adravida,
21mm in Araxos, 19mm in Florina (4 /2),
33mm in Larisa, 32mm in Preveza, 41mm in Aghialos, 40mm in Lamia,
39mm in Argostoli, 24mm in Tripoli, 51mm in Zakynthos, 36mm in Tithorea,
26mm in Antirio , 24mm in Kimi (10/2).



**Deviation of monthly precipitation
height from normal values (%)**

TABLE OF MEAN VALUES

STATION	Longitude	Latitude	Tmean	TX	TN	RR	INST
SERRES	23,53	41,07	7.7	12.1	7.4	67	079
FLORINA	21,40	40,78					
KASTORIA	21,27	40,45	4.6	8.8	0.7	123	069
TRIKALA_IMATHIAS	22,55	40,60					
THESSALONIKI	22,97	40,52	8.9	11.7	5.7	68	076
CHRYSOUPOLI	24,62	40,92	7.8	11	4.8	77	084
ALEXANDROUPOLI	25,95	40,85	7.5	10.5	4.4	81	096
KOZANI	21,83	40,28	4.8	8.2	1.3	81	
KERKYRA	19,92	39,62	11.3	14.2	7.9	304	086
IOANNINA	20,82	39,70	6.8	10.8	3.2	248	063
PREVEZA	20,76	38,91	11	14	8.1	278	
TRIKALA_THESSALIAS	21,77	39,52					
LARISA	22,45	39,65	8.3	12.6	4.3	113	081
LIMNOS	25,23	39,92	9.9	12.3	7.7	82	084
ARTA	21,00	39,17					
AGHIALOS	22,78	39,21					
MYTILINI	26,60	39,05	12.2	15	9.7	132	099
VELO	22,77	37,97					
AGRINIO	21,35	38,60					
LAMIA	22,43	38,87					
ANDRAVIDA	21,28	37,92	11.4	15	8.1	214	103
SKYROS	24,48	38,96					
ARGOSTOLI	20,50	38,12	12.3	15.4	8.9	232	118
ARAXOS	21,42	38,15	11.4	14.6	8.1	144	115
TANAGRA	23,57	38,33					
HIOS	26,13	38,35	12.4	15.1	9.5	167	111
PYRGOS	21,42	37,67					
TRIPOLI	22,40	37,52	7.4	11.3	3.5	177	128
TATOI	23,78	38,10	10.1	13.8	6.4	40	
HELLINIKO	23,73	37,90	12.6	15.8	9.8	66	142
ELEYSINA	23,55	38,07	11.8	15.2	8	91	
ZAKYNTHOS	20,88	37,75	11.7	14.7	8.6	209	108
SAMOS	26,92	37,68	13.3	16.1	11	137	
ARGOS	22,75	37,63					
KALAMATA	22,02	37,07	11.3	16	7.3	162	123
NAXOS	25,37	37,10	14.2	16.6	11.6	67	129
METHONI	21,70	36,82					
MHLOS	24,43	36,73					
SPATA	23,95	37,95	11.9	14.7	7.5	63	
KOS	27,08	36,80	13.4	15.8	11.4	111	
KYTHIRA	22,98	36,15					
SANTORINI	25,41	36,41	12.9	14.8	10.8	48	130
SOUDA	24,12	35,55	12.8	16.2	10	72	124
RODOS	28,08	36,40	14.6	16.7	12.5	145	105
MYKONOS	25,35	37,43	13	15	11.8	47	
HRAKLEIO	25,18	35,33	13.8	16.7	10.8	38	121
IERAPETRA	25,73	35,02					
SITEIA	26,10	35,21	11.4	14.9	10	31	097
RETHYMNO	24,50	35,36					
TYMPAKI	24,76	35,06					
KASTELI	25,33	35,18	11.5	15.3	8.1	62	112
KARPATOS	27,15	35,42	15.2	17.4	13.2	41	
PAROS	25,13	37,02	13.7	16	11.5	70	134
SYROS	24,95	37,42	13.3	15.5	11.5	53	139
IKARIA	26,35	37,68					

11,314,58,13617810,214,16,45611,314,57,89612510,713,7820210,5165,88616112,715,410,232137

**TABLE OF DEVIATIONS
FROM NORMAL VALUES**

STATION	TMEAN (deviation) (I)	PRECI (deviation %) (II)
SERRES	1.4	158
FLORINA		
THESSALONIKI	2.2	169
ALEXANDROUPOLI	1.7	132
KOZANI	1.2	256
KERKYRA	1	223
IOANNINA	0.7	215
LARISA	1.5	324
LIMNOS	2	186
AGHIALOS		
MYTILINI	2.4	136
AGRINIO		
SKYROS		
ARGOSTOLI	0.6	205
ARAXOS	0.9	169
HIOS	2.6	200
HELLINIKO	2.1	138
ZAKYNTHOS	0.2	185
SAMOS	3.3	133
KALAMATA	0.6	159
NAXOS	2.1	114
METHONI		
SANTORINI	1.7	79
SOUDA	1.7	64
RODOS	2.6	123
HERAKLIO	1.6	49
SITIA	-1	41

(I) deviation of mean temperature from normal values
 (II) deviation of monthly precipitation height from normal values %.

Climatic Bulletin

General Description

Precipitation amounts were higher enough than normals over most parts (mainly over Ipirus and Thessaly).
The mean temperature varied higher than normal values almost everywhere.

Climatic Parameters :

- ❖ **Normal Values** : normal values for various parameters (temperature, precipitation, etc) are defined as mean values calculated for 30 years. These normal values are used as basis and represent the mean situation. They can be specified in 10 daily, monthly, seasonally and yearly level and are used for the trend comparison of 10 days, month, season or year as: rainy decameron, mild winter, cool August etc.

Measurement :

- ❖ **Precipitation**
1 mm = 1 litre/m²

Table Legend :

Tmean : Mean Temperature
TN : Minimum Temperature
TX : Maximum Temperature
RR : Precipitation height(mm)
INST : Sun Duration (hours)

UTC hours (Universal Time Coordinates) in Greece :

- ❖ Winter : UTC hour = local hour - 2
- ❖ Summer : UTC hour = local hour - 3

© Hellenic National Meteorological Service
Reproduction is prohibited without written authorization
14 El.Venizelou 16777
Helliniko, Athens
Greece