



Climatic Bulletin

March 2019

 **Max
temperature**

 **Min
temperature**

 **Mean
temperature**

 **Precipitation**

 **Sunshine
duration**

March was a sunny month in general. Also its main characteristic was the prevalence of gale force winds for the half of the period while the wind force climbed at ten of the Beaufort scale over the area of Aegean sea. Local significant rainfalls recorded over southern parts of Aegean and over the island of Creta from the middle to the end of the period.



ΕΘΝΙΚΗ
ΜΕΤΕΩΡΟΛΟΓΙΚΗ
ΥΠΗΡΕΣΙΑ

HELLENIC NATIONAL METEOROLOGICAL SERVICE



Temperature

First 10-day period

More specific (varied) :

Minimum:

from -7°C to 11°C over north mainland,
 from -1°C to 12°C over central mainland,
 from 0°C to 14°C over rest parts.

Maximum:

from 9°C to 23°C over north mainland,
 from 12°C to 25°C over central mainland,
 from 10°C to 26°C over rest parts.

Second 10-day period

More specific (varied) :

Minimum:

from -4°C to 13°C over north mainland,
 from -1°C to 14°C over central mainland,
 from 0°C to 16°C over rest parts.

Maximum:

from 4°C to 24°C over north mainland,
 from 10°C to 25°C over central mainland,
 from 10°C to 27°C over rest parts.

Third 10-day period

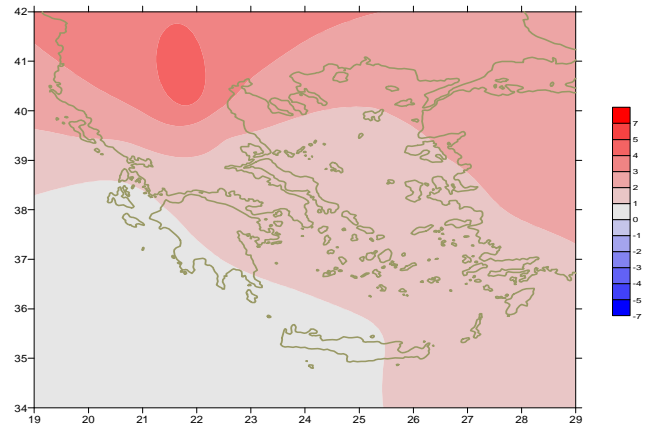
More specific (varied) :

Minimum:

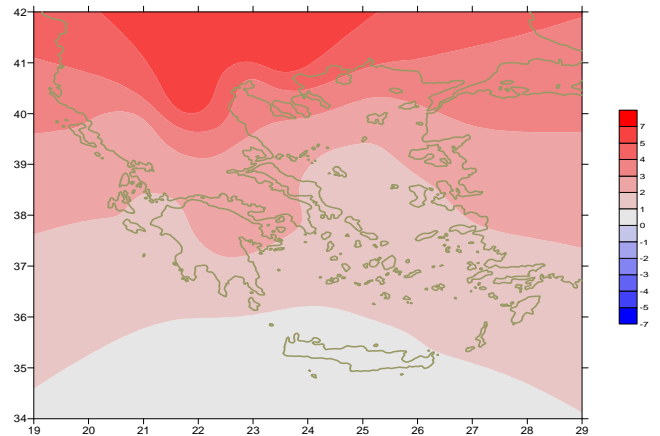
from -2°C to 12°C over north mainland,
 from 3°C to 13°C over central mainland,
 from 4°C to 15°C over rest parts.

Maximum:

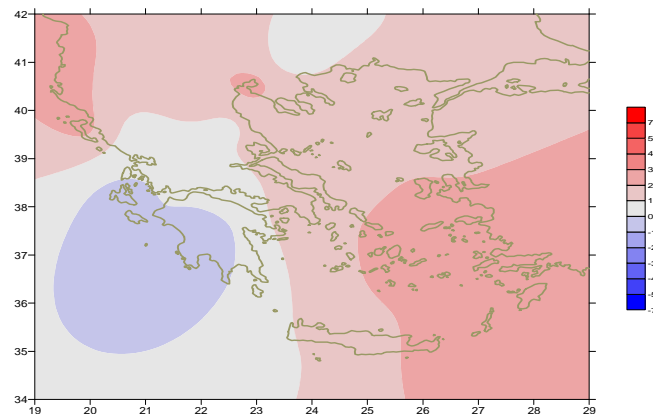
from 9°C to 23°C over north mainland,
 from 8°C to 22°C over central mainland,
 from 8°C to 24°C over rest parts.



Deviation of mean temperature from normal values



Deviation of maximum temperature from normal values



Deviation of minimum temperature from normal values



Precipitation

First 10-day period

Locally significant amounts of precipitation in the beginning.

More specific:

5mm in Chrissoupoli, 11mm in Milos, 14mm in Astipalea, 15mm in Kos, 31mm in Kasteli, 17mm in Paros, 17mm in Syros, 20mm in Oreoi (3/3).

Second 10-day period

Locally significant amounts of precipitation.

More specific:

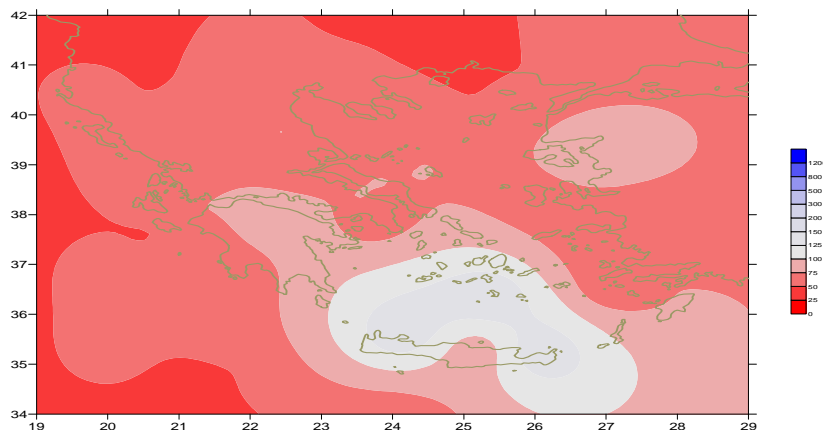
24mm in Mitilini, 15mm in Santorini, 12mm in Paleochora (12/3), 24mm in Chios, 18mm in Kos, 19mm in Leros, 19mm in Rodos, 26mm in Syros, 19mm in Tinos, 35mm in Oreoi, 18mm in Kimi (13/3), 15mm in Kerkira, 16mm in Othonoi (14/3), 16mm in Karistos, 22mm in Elefsina, 14mm in Spata, 16mm in Kasteli, 12mm in Hellinikon (15/3).

Third 10-day period

Locally large amounts of precipitation at the end.

More specific:

15mm in Lamia, 21mm in Andravida, 32mm in Argostoli, 17mm in Araxos, 35mm in Tripoli, 19mm in Zakynthos, 28mm in Argos, 25mm in Kalamata, 16mm in Milos, 10mm in Karpathos, 10mm in Killini, 13mm in Antirio (28/3).



*Deviation of monthly precipitation height
from normal values (%)*

TABLE OF MEAN VALUES

STATION	Longitude	Latitude	Tmean	TX	TN	RR	INST
SERRES	23,53	41,07	12,7	20,6	4,6	9	211
FLORINA	21,40	40,78					
KASTORIA	21,27	40,45	10,3	17,2	1,2	7	221
TRIKALA_IMATHIAS	22,55	40,60					
THESSALONIKI	22,97	40,52	12,5	17,6	6,8	11	232
CHRYSOUPOLI	24,62	40,92	11,2	15,9	5,8	13	217
ALEXANDROUPOLI	25,95	40,85	11,1	16,1	4,9	10	242
KOZANI	21,83	40,28	11,5	17,5	3,7	7	
KERKYRA	19,92	39,62	14,3	19,1	9,1	24	258
IOANNINA	20,82	39,70	11,3	16,9	3,9	16	219
PREVEZA	20,76	38,91	13,7	18,2	9	27	
TRIKALA_THESSALIAS	21,77	39,52					
LARISA	22,45	39,65	11,7	18,7	4	23	226
LIMNOS	25,23	39,92	11,8	15,2	8,2	10	239
ARTA	21,00	39,17					
AGHIALOS	22,78	39,21	11,8	17,1	6	14	234
MYTILINI	26,60	39,05	13,8	17,4	9,9	60	261
VELO	22,77	37,97					
AGRINIO	21,35	38,60					
LAMIA	22,43	38,87					
ANDRAVIDA	21,28	37,92	12,6	18,1	6,8	38	241
SKYROS	24,48	38,96	13	15,8	10,3	39	230
ARGOSTOLI	20,50	38,12	13,5	18,1	9	43	254
ARAXOS	21,42	38,15	13,4	17,9	7,7	42	244
TANAGRA	23,57	38,33	11,7	17	5,9	34	228
HIOS	26,13	38,35	13,4	16,7	9,5	32	246
PYRGOS	21,42	37,67					
TRIPOLI	22,40	37,52	9,5	15,5	2,4	63	232
TATOI	23,78	38,10	11,6	16,6	5,9	27	
HELLINIKO	23,73	37,90	13,9	17,9	10,3	14	265
ELEYSINA	23,55	38,07	13,7	18,1	8,8	27	
ZAKYNTHOS	20,88	37,75	13,3	17,8	9	37	267
SAMOS	26,92	37,68	14,1	17,6	10,4	34	
ARGOS	22,75	37,63					
KALAMATA	22,02	37,07	13,1	18,8	6,2	42	246
NAXOS	25,37	37,10					
METHONI	21,70	36,82					
MHLOS	24,43	36,73					
SPATA	23,95	37,95					
KOS	27,08	36,80	14,4	17,4	11,7	60	
KYTHIRA	22,98	36,15					
SANTORINI	25,41	36,41	14,4	16,7	12,5	91	228
SOUDA	24,12	35,55	13,3	17	9,9	100	209
RODOS	28,08	36,40	15,4	18,4	12,8	58	246
MYKONOS	25,35	37,43	13,8	16,4	12,4	33	
HRAKLEIO	25,18	35,33	14,1	17	11	36	227
IERAPETRA	25,73	35,02					
SITEIA	26,10	35,21	15,8	18	13,2	67	176
RETHYMNO	24,50	35,36					
TYMPAKI	24,76	35,06					
KASTELI	25,33	35,18	11,9	16,2	7,5	120	206
KARPATOS	27,15	35,42	15,7	18,2	12,7	62	
PAROS	25,13	37,02	13,9	16,7	11,9	62	222
SYROS	24,95	37,42	13,7	16,5	11,3	56	257
IKARIA	26,35	37,68					

11,314,58,13617810,214,16,45611,314,57,89612510,713,7820210,5165,88616112,715,410,232137

**TABLE OF DEVIATIONS
FROM NORMAL VALUES**

STATION	TMEAN (deviation) (I)	PRECI (deviation %) (II)
SERRES	3	27
FLORINA		
THESSALONIKI	2.9	24
ALEXANDROUPOLI	2.6	19
KOZANI	4.5	17
KERKYRA	2.2	24
IOANNINA	2.4	16
LARISA	2.2	63
LIMNOS	1.9	19
AGHIALOS	1.8	27
MYTILINI	2	80
AGRINIO		
SKYROS	1.3	76
ARGOSTOLI	0.4	52
ARAXOS	1.1	71
HIOS	1.6	44
HELLINIKO	1.5	32
ZAKYNTHOS	0.4	41
SAMOS	1.9	40
KALAMATA	0.7	58
NAXOS		
METHONI		
SANTORINI	1.7	152
SOUDA	0.7	124
RODOS	1.8	77
HERAKLIO	0.5	63
SITIA	2	119

(I) deviation of mean temperature from normal values
 (II) deviation of monthly precipitation height from normal values %.

Climatic Bulletin

General Description

Precipitation amounts were lower enough than normal values over most parts with the exception of few islands of south Aegean and mainly over the island of Creta where they were higher. The mean temperature varied higher enough than normals everywhere.

Climatic Parameters :

- ❖ **Normal Values** : normal values for various parameters (temperature, precipitation, etc) are defined as mean values calculated for 30 years. These normal values are used as basis and represent the mean situation. They can be specified in 10 daily, monthly, seasonally and yearly level and are used for the trend comparison of 10 days, month, season or year as: rainy decameron, mild winter, cool August etc.

Measurement :

- ❖ **Precipitation**
1 mm = 1 litre/m²

Table Legend :

Tmean : Mean Temperature
 TN : Minimum Temperature
 TX : Maximum Temperature
 RR : Precipitation height(mm)
 INST : Sun Duration (hours)

UTC hours (Universal Time Coordinates) in Greece :

- ❖ Winter : UTC hour = local hour - 2
- ❖ Summer : UTC hour = local hour - 3

© Hellenic National Meteorological Service
 Reproduction is prohibited without written authorization
 14 El.Venizelou 16777
 Helliniko, Athens
 Greece