



Climatic Bulletin

April 2019

 Max
temperature

 Min
temperature

 Mean
temperature

 Precipitation

 Sunshine
duration

April was a relatively cold month for the first three weeks but it was hot enough during the last one. Also significant rainfalls and thunderstorms (occasionally with hail) recorded over most parts while snowfalls covered the peaks of high mountains.



Temperature

First 10-day period

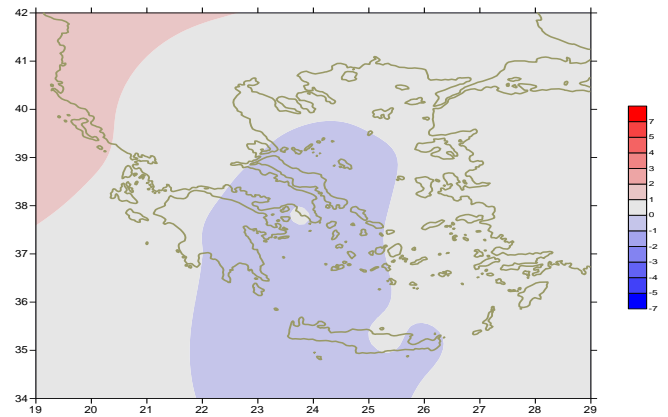
More specific (varied) :

Minimum:

from -2°C to 12°C over north mainland,
 from 0°C to 13°C over central mainland,
 from 2°C to 13°C over rest parts.

Maximum:

from 11°C to 22°C over north mainland,
 from 14°C to 23°C over central mainland,
 from 14°C to 20°C over rest parts.



Deviation of mean temperature from normal values

Second 10-day period

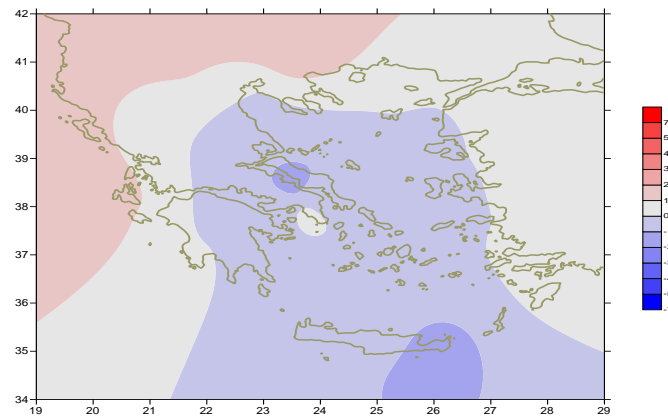
More specific (varied) :

Minimum:

from 0°C to 12°C over north mainland,
 from 2°C to 15°C over central mainland,
 from 4°C to 16°C over rest parts.

Maximum:

from 16°C to 22°C over north mainland,
 from 15°C to 24°C over central mainland,
 from 15°C to 22°C over rest parts.



Deviation of maximum temperature from normal values

Third 10-day period

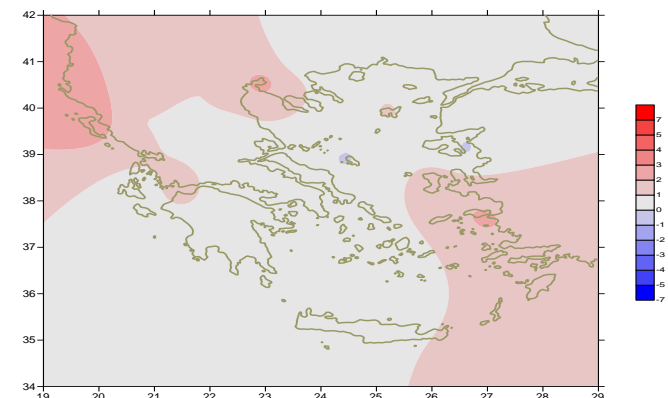
More specific (varied) :

Minimum:

from 0°C to 14°C over north mainland,
 from 3°C to 15°C over central mainland,
 from 8°C to 17°C over rest parts.

Maximum:

from 14°C to 27°C over north mainland,
 from 15°C to 28°C over central mainland,
 from 15°C to 26°C over rest parts.



Deviation of minimum temperature from normal values



P r e c i p i t a t i o n

First 10-day period

Locally significant amounts of precipitation.

More specific:

42mm in Astros, 23mm in Siros, 23mm in Argostoli, 24mm in Chios, 31mm in Astipalea, 45mm in Spata, 28mm in Kos, 42mm in Rodos, 28mm in Timbaki, 28mm in Kasteli, 32mm in Paros, 26mm in Leros, 23mm in Gavdos, 36mm in Paleochora, 35mm in Kimi (6/4), 29mm in Ikaria (7/4), 35mm in Tanagra (8/4), 31mm in Ormenio, 33mm in Soufli, 30mm in Skiros, 42mm in Mithilini, 25mm in Rodos (9/4).

Second 10-day period

Locally significant amounts of precipitation.

More specific:

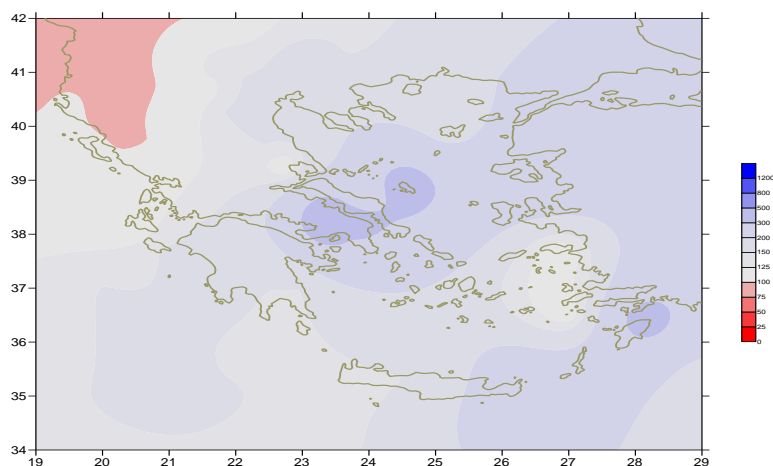
16mm in Ioannina, 20mm in Kranea, 20mm in Tripoli, 13mm in Spata, 13mm in Tatoi (12/4), 38mm in Ormenio, 14mm in Alexandroupoli, 14mm in Soufli (14/4), 17mm in Thessaloniki, 16mm in Kerkira, 20mm in Tithorea, 23mm in Tanagra, 22mm in Oreoi, 22mm in Mikonos, 56mm in Elefsina, 17mm in Nat.Kolimvitiro (15/4), 18mm in Tinos, 18mm in Tatoi (16/4).

Third 10-day period

Locally very small amounts of precipitation in the beginning.

More specific:

6mm in Kerkira, 3mm in Kalamata (21 /4), 6mm in Edessa (23/4).



**Deviation of monthly precipitation height
from normal values (%)**

TABLE OF MEAN VALUES

STATION	Longitude	Latitude	Tmean	TX	TN	RR	INST
SERRES	23,53	41,07	15,2	21,8	8,2	44	190
FLORINA	21,40	40,78					
KASTORIA	21,27	40,45	12	17,9	4,9	42	171
TRIKALA_IMATHIAS	22,55	40,60					
THESSALONIKI	22,97	40,52	15	19,3	9,7	70	209
CHRYSOUPOLI	24,62	40,92	13,8	17,4	9,1	34	217
ALEXANDROUPOLI	25,95	40,85	13,4	17,4	7,4	67	212
KOZANI	21,83	40,28	13,4	17,5	6,4	42	
KERKYRA	19,92	39,62	16,6	20,7	11,9	61	199
IOANNINA	20,82	39,70	13,2	18,5	7	64	163
PREVEZA	20,76	38,91	16,1	19,9	11,7	61	
TRIKALA_THESSALIAS	21,77	39,52					
LARISA	22,45	39,65	14,3	19,5	7	32	188
LIMNOS	25,23	39,92	14,1	17,3	9,9	52	237
ARTA	21,00	39,17					
AGHIALOS	22,78	39,21	14,4	18,3	8,2	29	187
MYTILINI	26,60	39,05	15,9	19,3	11,3	124	252
VELO	22,77	37,97					
AGRINIO	21,35	38,60					
LAMIA	22,43	38,87					
ANDRAVIDA	21,28	37,92	15,6	20,1	9,7	46	208
SKYROS	24,48	38,96	14,6	17	11,5	79	212
ARGOSTOLI	20,50	38,12	16,1	19,9	12	62	221
ARAXOS	21,42	38,15	16	19,7	11,1	53	206
TANAGRA	23,57	38,33	14,1	18,4	7,6	110	190
HIOS	26,13	38,35	15,6	18,5	11,7	91	238
PYRGOS	21,42	37,67					
TRIPOLI	22,40	37,52	11,6	16,6	5,3	81	191
TATOI	23,78	38,10	14,2	18,2	7,9	74	
HELLINIKO	23,73	37,90	16,1	19,6	11,8	61	212
ELEYSINA	23,55	38,07	15,6	19,2	10,7	172	
ZAKYNTHOS	20,88	37,75	16,2	19,7	11,3	74	219
SAMOS	26,92	37,68	16,4	19,8	12,8	32	
ARGOS	22,75	37,63					
KALAMATA	22,02	37,07	15,4	20,2	9,3	77	200
NAXOS	25,37	37,10					
METHONI	21,70	36,82					
MHLOS	24,43	36,73					
SPATA	23,95	37,95	14,9	18,1	8,9		
KOS	27,08	36,80	16,3	19,5	13,2	48	
KYTHIRA	22,98	36,15					
SANTORINI	25,41	36,41					
SOUDA	24,12	35,55	15,3	19,2	11,5	38	218
RODOS	28,08	36,40	17,6	20,8	14,4	84	262
MYKONOS	25,35	37,43	15,4	17,6	12,8	58	
HRAKLEIO	25,18	35,33	16,7	19,6	12,8	35	231
IERAPETRA	25,73	35,02					
SITEIA	26,10	35,21	16,7	18,8	13,5	67	210
RETHYMNO	24,50	35,36					
TYMPAKI	24,76	35,06					
KASTELI	25,33	35,18	14,5	18,7	9,8	36	212
KARPATIOS	27,15	35,42	17	19,5	14,2	33	
PAROS	25,13	37,02	15,9	18,7	12,6	65	244
SYROS	24,95	37,42	15,6	18,3	12,8	55	238
IKARIA	26,35	37,68					

11,314,58,13617810,214,16,45611,314,57,89612510,713,7820210,5165,88616112,715,410,232137

**TABLE OF DEVIATIONS
FROM NORMAL VALUES**

STATION	TMEAN (deviation) (I)	PRECI (deviation %) (II)
SERRES	0.9	124
FLORINA		
THESSALONIKI	0.8	194
ALEXANDROUPOLI	0.2	169
KOZANI	1.5	104
KERKYRA	1.5	99
IOANNINA	0.6	84
LARISA	0.3	111
LIMNOS	0.3	161
AGHIALOS	0.2	84
MYTILINI	0.1	265
AGRINIO		
SKYROS	-0.6	359
ARGOSTOLI	0.7	104
ARAXOS	0.6	127
HIOS	0.3	221
HELLINIKO	0.1	246
ZAKYNTHOS	0.7	144
SAMOS	0.3	101
KALAMATA	0	162
NAXOS		
METHONI		
SANTORINI		
SOUDA	-0.5	120
RODOS	0.9	350
HERAKLIO	0.1	117
SITIA	-0.1	245

(I) deviation of mean temperature from normal values
(II) deviation of monthly precipitation height from normal values %.

Climatic Bulletin

General Description

Precipitation amounts were higher than normal values in general with the exception of northwestern parts. The mean temperature varied slightly higher than normals over most parts.

Climatic Parameters :

- ❖ **Normal Values** : normal values for various parameters (temperature, precipitation, etc) are defined as mean values calculated for 30 years. These normal values are used as basis and represent the mean situation. They can be specified in 10 daily, monthly, seasonal and yearly level and are used for the trend comparison of 10 days, month, season or year as: rainy decameron, mild winter, cool August etc.

Measurement :

- ❖ **Precipitation**
1 mm = 1 litre/m²

Table Legend :

Tmean : Mean Temperature
 TN : Minimum Temperature
 TX : Maximum Temperature
 RR : Precipitation height(mm)
 INST : Sun Duration (hours)

UTC hours (Universal Time Coordinates) in Greece :

- ❖ Winter : UTC hour = local hour - 2
- ❖ Summer : UTC hour = local hour - 3

© Hellenic National Meteorological Service
 Reproduction is prohibited without written authorization
 14 El.Venizelou 16777
 Helliniko, Athens
 Greece