




Climatic Bulletin

April 2020

 **Max
temperature**

 **Min
temperature**

 **Mean
temperature**

 **Precipitation**

 **Sunshine
duration**

April characterized by alternation of very cold and hot periods. Meanwhile during the "bad weather" period (4-8/4) a lot of damages caused due to long lasting rainfalls. The most affected areas were the mountain Pilion , the islands of Sporades , Evia and Athos peninsula. Also near gale to gale force winds prevailed for a long period.



Temperature

First 10-day period

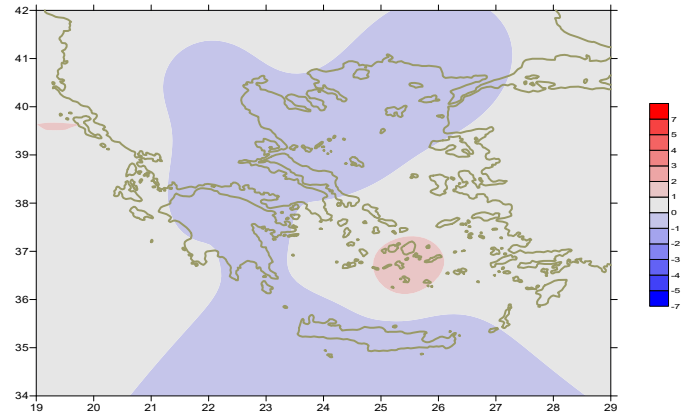
More specific (varied) :

Minimum:

from -6.5°C to 10°C over north mainland,
 from 0°C to 11°C over central mainland,
 from 5°C to 15°C over rest parts.

Maximum:

from 2°C to 25°C over north mainland,
 from 3°C to 26°C over central mainland,
 from 11°C to 24°C over rest parts.



Deviation of mean temperature from normal values

Second 10-day period

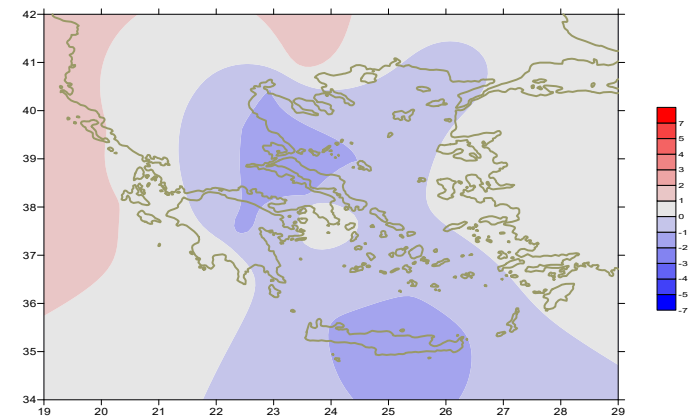
More specific (varied) :

Minimum:

from -3°C to 13°C over north mainland,
 from 0°C to 15°C over central mainland,
 from 6°C to 15°C over rest parts.

Maximum:

from 7°C to 28°C over north mainland,
 from 11°C to 28°C over central mainland,
 from 14°C to 25°C over rest parts.



Deviation of maximum temperature from normal values

Third 10-day period

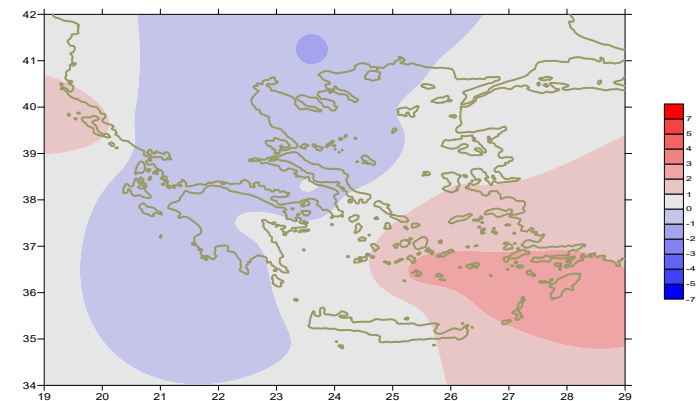
More specific (varied) :

Minimum:

from -1°C to 15°C over north mainland,
 from 2°C to 16°C over central mainland,
 from 5°C to 17°C over rest parts.

Maximum:

from 8°C to 28°C over north mainland,
 from 8°C to 29°C over central mainland,
 from 13°C to 28°C over rest parts.



Deviation of minimum temperature from normal values



P r e c i p i t a t i o n

First 10-day period

Locally high amounts of precipitation.
More specific:

26mm in Thessaloniki, 21mm in Serres, 21mm in Florina,
24mm in Kozani, 20mm in Konitsa (1/4),
30mm in Kavala, 50mm in Doxato, 26mm in Ikaria (2/4),
36mm in Alexandroupoli, 17mm in Kastoria, 27mm in Kranea,
24mm in Aghialos, 54mm in Tithorea, 61mm in Oreoi,
22mm in Skiros, 42mm in Tanagra, 51mm in Astros, 47mm in Argos,
22mm in Limnos (4/4),
31mm in Ormenio, 29mm in Thessaloniki, 90mm in Skiathos,
59mm in Oreoi, 31mm in Tanagra, 41mm in Shinias, 36mm in Spata,
26mm in Tatoi, 26mm in Kotroni (5/4),
42mm in Oreoi, 21mm in Lavrio (6/4),
15mm in Kasteli (8/4).

Second 10-day period

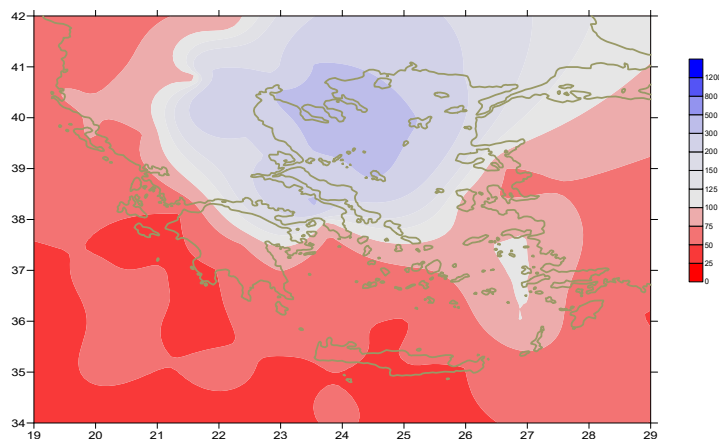
Locally low amounts of precipitation only in the middle of the period.
More specific:

17mm in Ormenio, 9mm in Doxato, 11mm in Limnos (15/4),
7mm in Kasteli, 8mm in Samos (16/4).

Third 10-day period

Remarkable amounts at the beginning of the period.
More specific:

9mm in Florina, 12mm in Kastoria (21/4),
14mm in Othonoi, 12mm in Kastoria (22/4),
14mm in Kozani, 15mm in Ioannina, 20mm in Kerkira,
15mm in Zakynthos, 29mm in Othonoi, 12mm in Kranea (23/4).



**Deviation of monthly precipitation height
from normal values (%)**

TABLE OF MEAN VALUES

STATION	Longitude	Latitude	Tmean	TX	TN	RR	INST
RRES	23,53	41,07	14,6	21,3	6,6	81	185
FLORINA	21,40	40,78					
KASTORIA	21,27	40,45	11,6	17,3	3,6	84	186
TRIKALA_IMATHIAS	22,55	40,60					
THESSALONIKI	22,97	40,52	14	18,2	7,3	111	205
CHRYSOUPOLI	24,62	40,92	13,4	17,4	7,9	86	238
ALEXANDROUPOLI	25,95	40,85	12,9	16,9	7,2	77	236
KOZANI	21,83	40,28	11,3	16,5	4,6	97	
KERKYRA	19,92	39,62	16,1	20,3	10,8	42	233
IOANNINA	20,82	39,70	13,1	18,6	5,4	53	179
PREVEZA	20,76	38,91	15,2	18,7	10,4	33	
TRIKALA_THESSALIAS	21,77	39,52					
LARISA	22,45	39,65	13,6	19	6,2	58	209
LIMNOS	25,23	39,92	13,3	16,8	8,9	80	230
ARTA	21,00	39,17					
AGHIALOS	22,78	39,21	13,5	17,8	7,1	58	199
MYTILINI	26,60	39,05	16	19,9	11,6	30	249
VELO	22,77	37,97					
AGRINIO	21,35	38,60					
LAMIA	22,43	38,87					
ANDRAVIDA	21,28	37,92	15,5	20,4	8,8	7	245
SKYROS	24,48	38,96	14,5	16,9	11	74	206
ARGOSTOLI	20,50	38,12	15,9	19,3	11,2	15	246
ARAXOS	21,42	38,15	15,3	19,4	9,1	4	227
TANAGRA	23,57	38,33	13,6	18,3	7,3	92	228
HIOS	26,13	38,35	15,9	19	11	27	248
PYRGOS	21,42	37,67					
TRIPOLI	22,40	37,52	11	16,1	5,2	36	201
TATOI	23,78	38,10	14,2	18,5	7,9	41	
HELLINIKO	23,73	37,90	16,3	20,1	11,5	20	251
ELEYSINA	23,55	38,07	15,8	19,9	10,3	44	
ZAKYNTHOS	20,88	37,75					
SAMOS	26,92	37,68	16,5	20,2	12,2	38	
ARGOS	22,75	37,63					
KALAMATA	22,02	37,07	15,5	20,8	8,7	21	224
NAXOS	25,37	37,10					
METHONI	21,70	36,82					
MHLOS	24,43	36,73					
SPATA	23,95	37,95	15	18,5	8,5		
KOS	27,08	36,80	16,8	20,1	13,9		
KYTHIRA	22,98	36,15					
SANTORINI	25,41	36,41	17,2	17,3	14,8	10	248
SOUDA	24,12	35,55	15,4	18,9	11,3	16	243
RODOS	28,08	36,40	17,7	20,7	14,8	3	274
MYKONOS	25,35	37,43	16,8	17,8	14,2	16	
HRAKLEIO	25,18	35,33	16,3	18,9	12	15	240
IERAPETRA	25,73	35,02					
SITEIA	26,10	35,21	16	19,1	14,2	14	222
RETHYMNO	24,50	35,36					
TYMPAKI	24,76	35,06					
KASTELI	25,33	35,18	14,4	18,3	9,9	62	217
KARPATHOS	27,15	35,42	17	19,5	14	10	
PAROS	25,13	37,02	15,5	18,5	13	3	243
SYROS	24,95	37,42	15,6	18,5	12,7	11	249
IKARIA	26,35	37,68					

**TABLE OF DEVIATIONS
FROM NORMAL VALUES**

STATION	TMEAN (deviation) (I)	PRECI (deviation %) (II)
SERRES	0.3	228
FLORINA		
THESSALONIKI	-0.2	308
ALEXANDROUPOLI	-0.3	194
KOZANI	-0.6	241
KERKYRA	1	68
IOANNINA	0.5	70
LARISA	-0.4	201
LIMNOS	-0.5	248
AGHIALOS	-0.7	168
MYTILINI	0.2	64
AGRINIO		
SKYROS	-0.7	336
ARGOSTOLI	0.5	25
ARAXOS	-0.1	10
HIOS	0.6	66
HELLINIKO	0.3	81
ZAKYNTHOS		
SAMOS	0.4	120
KALAMATA	0.1	44
NAXOS		
METHONI		
SANTORINI	1.6	52
SOUDA	-0.4	50
RODOS	1	13
HERAKLIO	-0.3	50
SITIA	-0.8	51

(I) deviation of mean temperature from normal values
 (II) deviation of monthly precipitation height from normal values %.

Climatic Bulletin

General Description

Precipitation amounts were higher than normal values over central and north parts while they were lower enough over west and southern parts.
The mean temperature varied lower than normals mainly over mainland.

Climatic Parameters :

- ❖ **Normal Values** : normal values for various parameters (temperature, precipitation, etc) are defined as mean values calculated for 30 years. These normal values are used as basis and represent the mean situation. They can be specified in 10 daily, monthly, seasonally and yearly level and are used for the trend comparison of 10 days, month, season or year as: rainy decameron, mild winter, cool August etc.

Measurement :

- ❖ **Precipitation**
1 mm = 1 litre/m²

Table Legend :

Tmean : Mean Temperature
TN : Minimum Temperature
TX : Maximum Temperature
RR : Precipitation height(mm)
INST : Sun Duration (hours)

UTC hours (Universal Time Coordinates) in Greece :

- ❖ Winter : UTC hour = local hour - 2
- ❖ Summer : UTC hour = local hour - 3

© Hellenic National Meteorological Service
Reproduction is prohibited without written authorization
14 El.Venizelou 16777
Helliniko, Athens
Greece