




# Climatic Bulletin

March 2021

 **Max  
temperature**

 **Min  
temperature**

 **Mean  
temperature**

 **Precipitation**

 **Sunshine  
duration**

March was a slightly cold month with the mean temperature values keeping lower than normal ones almost everywhere. Also the precipitation amounts were lower enough than normal levels mainly over east parts. Meanwhile gale force winds prevailed over Greek seas for a long time.



ΕΘΝΙΚΗ  
**ΜΕΤΕΩΡΟΛΟΓΙΚΗ**  
ΥΠΗΡΕΣΙΑ  
HELLENIC NATIONAL METEOROLOGICAL SERVICE



# Temperature

### First 10-day period

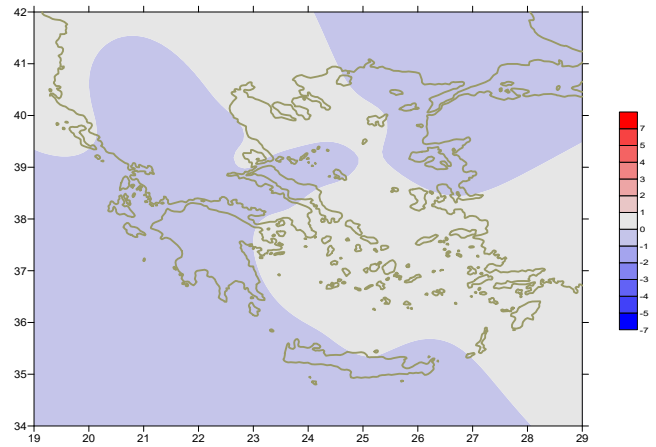
More specific (varied) :

**Minimum:**

from  $-5^{\circ}\text{C}$  to  $9^{\circ}\text{C}$  over north mainland,  
 from  $-2^{\circ}\text{C}$  to  $11^{\circ}\text{C}$  over central mainland,  
 from  $-2^{\circ}\text{C}$  to  $14^{\circ}\text{C}$  over rest parts.

**Maximum:**

from  $9^{\circ}\text{C}$  to  $19^{\circ}\text{C}$  over north mainland,  
 from  $11^{\circ}\text{C}$  to  $21^{\circ}\text{C}$  over central mainland,  
 from  $12^{\circ}\text{C}$  to  $22^{\circ}\text{C}$  over rest parts.



*Deviation of mean temperature from normal values*

### Second 10-day period

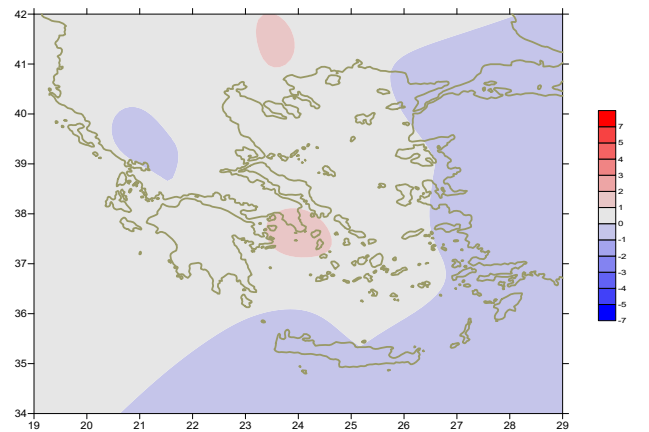
More specific (varied) :

**Minimum:**

from  $-7^{\circ}\text{C}$  to  $13^{\circ}\text{C}$  over north mainland,  
 from  $-2^{\circ}\text{C}$  to  $11^{\circ}\text{C}$  over central mainland,  
 from  $-1^{\circ}\text{C}$  to  $13^{\circ}\text{C}$  over rest parts.

**Maximum:**

from  $6^{\circ}\text{C}$  to  $20^{\circ}\text{C}$  over north mainland,  
 from  $7^{\circ}\text{C}$  to  $20^{\circ}\text{C}$  over central mainland,  
 from  $8^{\circ}\text{C}$  to  $23^{\circ}\text{C}$  over rest parts.



*Deviation of maximum temperature from normal values*

### Third 10-day period

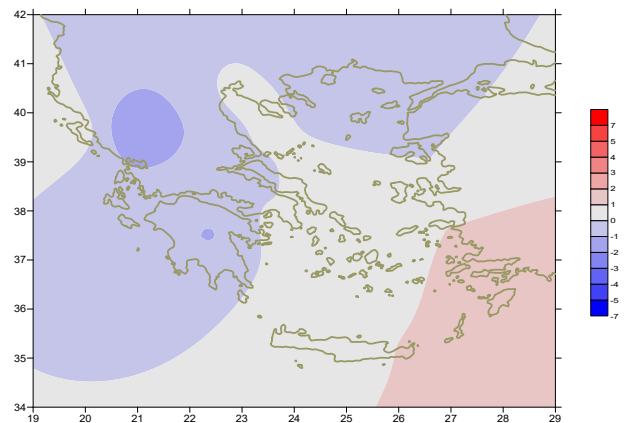
More specific (varied) :

**Minimum:**

from  $-7^{\circ}\text{C}$  to  $10^{\circ}\text{C}$  over north mainland,  
 from  $-3^{\circ}\text{C}$  to  $13^{\circ}\text{C}$  over central mainland,  
 from  $3^{\circ}\text{C}$  to  $15^{\circ}\text{C}$  over rest parts.

**Maximum:**

from  $2^{\circ}\text{C}$  to  $20^{\circ}\text{C}$  over north mainland,  
 from  $1^{\circ}\text{C}$  to  $21^{\circ}\text{C}$  over central mainland,  
 from  $6^{\circ}\text{C}$  to  $25^{\circ}\text{C}$  over rest parts.



*Deviation of minimum temperature from normal values*



## Precipitation

### First 10-day period

Locally small amounts of precipitation.

More specific:

7mm in Zakynthos, 4mm in Agchialos, 4mm in Tithorea (1/3),  
4mm in Preveza (6/3), 11mm in Tithorea (7/3),  
7mm in Adravida (8/3),  
22mm in Konitsa, 11mm in Kerkira, 6mm in Kranea (10/3).

### Second 10-day period

Locally significant amounts of precipitation.

More specific:

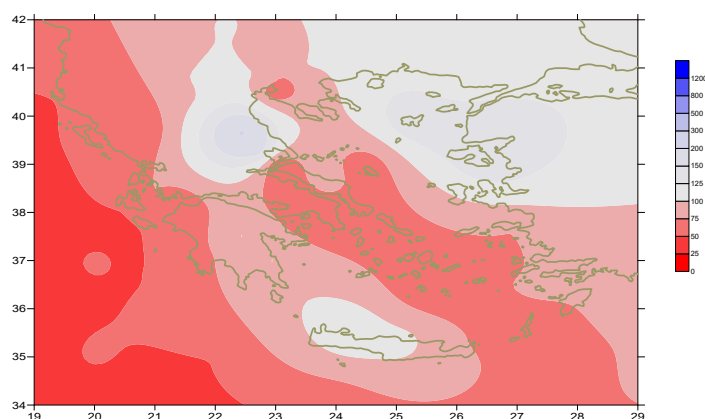
12mm in Doxato, 21mm in Mitilini (11 /3),  
13mm in Ioannina, 18mm in Rodos (12/3),  
16mm in Preveza (16/3), 15mm in Xanthi (18/3), 12mm in Kavala,  
15mm in Kalamata, 26mm in Tripoli, 39mm in Chios, 26mm in Samos,  
22mm in Mitilini (19/3), 11mm in Kastoria, 13mm in Kozani,  
17mm in Mesologi, 32mm in Larisa, 27mm in Aghialos, 22mm in Oreoi,  
15mm in Skiros, 17mm in Limnos, 13mm in Karpathos (20/3),

### Third 10-day period

Locally significant amounts of precipitation.

More specific:

14mm in Alexandroupoli, 20mm in Soufli, 17mm in Edessa,  
18mm in Florina, 20mm in Kastoria, 15mm in Kozani,  
20mm in Preveza, 15mm in Kerkira, 28mm in Larisa (21/3),  
19mm in Tithorea, 32mm in Oreoi, 18mm in Souda (23/3),  
16mm in Iraklion, 28mm in Souda, 22mm in Kasteli (24/3),  
12mm in Chios (25/3),  
15mm in Karistos, 10mm in Tanagra, 13mm in Tatoi (31/3).



**Deviation of monthly precipitation height  
from normal values (%)**

TABLE OF MEAN VALUES

STATION	Longitude	Lattitude	Tmean	TX	TN	RR	INST
RRES	23,53	41,07	9,9	15,9	3,6	30	194
FLORINA	21,40	40,78					
KASTORIA	21,27	40,45	6,5	12,3	-0,4	49	193
TRIKALA_IMATHIAS	22,55	40,60					
THESSALONIKI	22,97	40,52	10,1	14,2	5	24	204
CHRYSOUPOLI	24,62	40,92	8,8	12,9	4,4	44	179
ALEXANDROUPOLI	25,95	40,85	8	12,2	3,2	50	153
KOZANI	21,83	40,28	6,8	12,2	1,1	44	
KERKYRA	19,92	39,62	12,2	16,9	7,4	53	209
IOANNINA	20,82	39,70	8,6	14,3	1,4	38	188
PREVEZA	20,76	38,91	12,6	16,2	7,7	104	
TRIKALA_THESSALIAS	21,77	39,52					
LARISA	22,45	39,65	9,2	14,9	2,7	76	201
LIMNOS	25,23	39,92	10	13,1	6	64	204
ARTA	21,00	39,17					
AGHIALOS	22,78	39,21	10,1	15	4,7	58	201
MYTILINI	26,60	39,05	11,5	14,8	8,2	93	219
VELO	22,77	37,97					
AGRINIO	21,35	38,60					
LAMIA	22,43	38,87					
ANDRAVIDA	21,28	37,92	12,1	17,1	6,8	33	247
SKYROS	24,48	38,96	11,6	14,3	9	25	205
ARGOSTOLI	20,50	38,12	12,8	16,8	8,8	29	243
ARAXOS	21,42	38,15	12,1	16,1	7,2	24	237
TANAGRA	23,57	38,33	10	15	4,5	25	206
HIOS	26,13	38,35					
PYRGOS	21,42	37,67					
TRIPOLI	22,40	37,52	7,7	13,1	1,5	70	194
TATOI	23,78	38,10	10,2	14,8	5,3	21	
HELLINIKO	23,73	37,90	13	17,4	9,1	7	260
ELEYSINA	23,55	38,07	12,4	16,4	7,6	9	
ZAKYNTHOS	20,88	37,75	12,5	16,4	8,3	30	232
SAMOS	26,92	37,68	12,5	15,4	8,8	71	
ARGOS	22,75	37,63					
KALAMATA	22,02	37,07	11,9	17,9	6	48	222
NAXOS	25,37	37,10					
METHONI	21,70	36,82					
MHLOS	24,43	36,73					
SPATA	23,95	37,95					
KOS	27,08	36,80	12,9	16	10,6	32	
KYTHIRA	22,98	36,15					
SANTORINI	25,41	36,41	13,6	16	10,5	22	222
SOUDA	24,12	35,55	12,4	15,9	9,4	98	204
RODOS	28,08	36,40	14,4	16,9	11,7	67	248
MYKONOS	25,35	37,43	12,4	15,2	10,8	4	
HRAKLEIO	25,18	35,33	13,6	16,8	10,3	62	225
IERAPETRA	25,73	35,02					
SITEIA	26,10	35,21	13,3	16,2	11,4	36	195
RETHYMNO	24,50	35,36					
TYMPAKI	24,76	35,06					
KASTELI	25,33	35,18	10,8	14,6	7,3	85	213
KARPATIOS	27,15	35,42					
PAROS	25,13	37,02	12,9	15,7	10,7	24	217
SYROS	24,95	37,42	13,1	15,4	14	12	227
IKARIA	26,35	37,68					

11,314,58,13617810,214,16,45611,314,57,89612510,713,7820210,5165,88616112,715,410,232137

**TABLE OF DEVIATIONS  
FROM NORMAL VALUES**

STATION	TMEAN ( deviation ) (I)	PRECI ( deviation % ) (II)
SERRES	0.2	91
FLORINA		
THESSALONIKI	0.5	53
ALEXANDROUPOLI	-0.5	96
KOZANI	-0.2	105
KERKYRA	0.1	54
IOANNINA	-0.3	39
LARISA	-0.3	39
LIMNOS	0.1	124
AGHIALOS	0.1	111
MYTILINI	-0.3	124
AGRINIO		
SKYROS	-0.1	49
ARGOSTOLI	-0.3	35
ARAXOS	-0.2	40
HIOS		
HELLINIKO	0.6	16
ZAKYNTHOS	-0.4	34
SAMOS	0.3	83
KALAMATA	-0.5	67
NAXOS		
METHONI		
SANTORINI	0.9	37
SOUDA	-0.2	121
RODOS	0.8	89
HERAKLIO	0	108
SITIA	-0.5	64

(I) deviation of mean temperature from normal values  
 (II) deviation of monthly precipitation height from normal values %.

# Climatic Bulletin

## General Description

Precipitation amounts were lower than normal values mainly over eastern parts of Greece (included Attica).  
The mean temperature varied lower than normal values almost everywhere.

### Climatic Parameters :

- ❖ **Normal Values** : normal values for various parameters (temperature, precipitation, etc) are defined as mean values calculated for 30 years. These normal values are used as basis and represent the mean situation. They can be specified in 10 daily, monthly, seasonally and yearly level and are used for the trend comparison of 10 days, month, season or year as: rainy decameron, mild winter, cool August etc.

### Measurement :

- ❖ **Precipitation**  
1 mm = 1 litre/m<sup>2</sup>

### Table Legend :

Tmean : Mean Temperature  
TN : Minimum Temperature  
TX : Maximum Temperature  
RR : Precipitation height(mm)  
INST : Sun Duration (hours)

### UTC hours (Universal Time Coordinates) in Greece :

- ❖ Winter : UTC hour = local hour - 2
- ❖ Summer : UTC hour = local hour - 3

© Hellenic National Meteorological Service  
Reproduction is prohibited without written authorization  
14 El.Venizelou 16777  
Helliniko, Athens  
Greece