




Climatic Bulletin

August 2021

 **Max
temperature**

 **Min
temperature**

 **Mean
temperature**

 **Precipitation**

 **Sunshine
duration**

The first five days of August recorded as the hottest part of one of the most significant heat wave episodes of last 35 years.

It was characterized by long duration (28/7 -5/8) and high values of maximum temperatures.

Also the minimum values of temperature climbed or exceeded 29 degrees Centigrade between 3-5/8/21 causing a feeling of general discomfort.



Temperature

First 10-day period

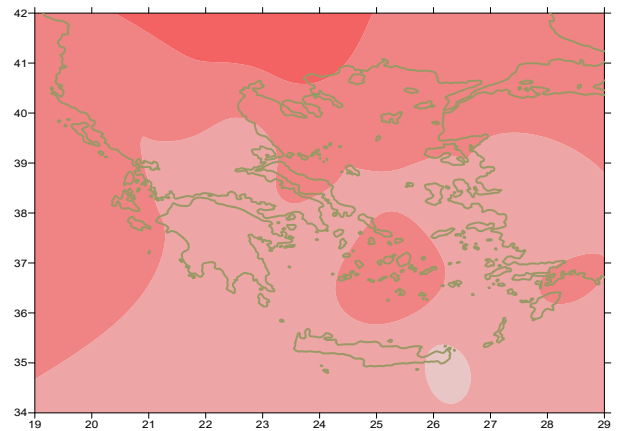
More specific (varied) :

Minimum:

from 11°C to 28°C over north mainland,
 from 15°C to 28°C over central mainland,
 from 17°C to 32.2°C over rest parts.

Maximum:

from 31°C to 42.8°C over north mainland,
 from 33°C to 46.3°C over central mainland,
 from 31°C to 41.4°C over rest parts.



Deviation of mean temperature from normal values

Second 10-day period

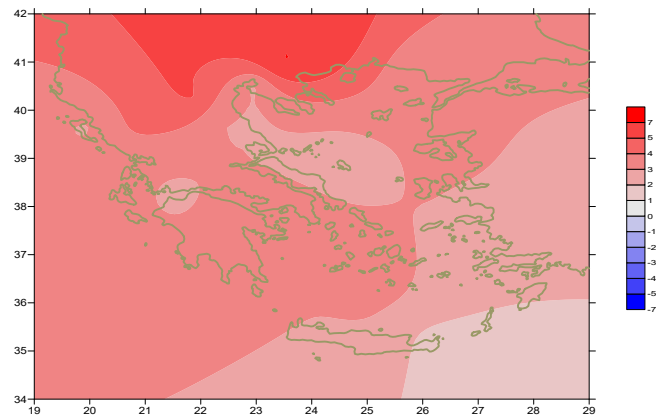
More specific (varied) :

Minimum:

from 11°C to 24°C over north mainland,
 from 17°C to 28°C over central mainland,
 from 15°C to 29°C over rest parts.

Maximum:

from 29°C to 40.5°C over north mainland,
 from 30°C to 41°C over central mainland,
 from 28°C to 37.2°C over rest parts.



Deviation of maximum temperature from normal values

Third 10-day period

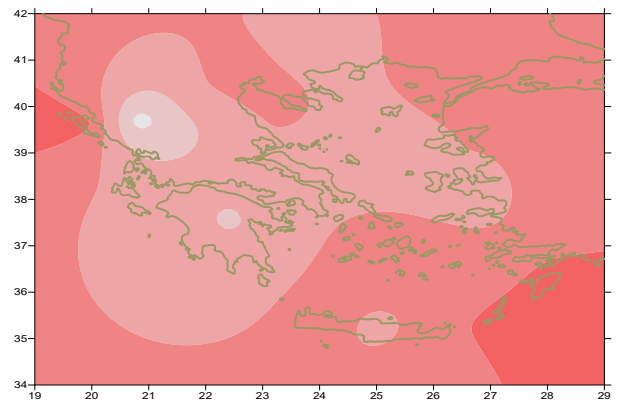
More specific (varied) :

Minimum:

from 6°C to 23°C over north mainland,
 from 15°C to 25°C over central mainland,
 from 13°C to 26°C over rest parts.

Maximum:

from 28°C to 37.6°C over north mainland,
 from 29°C to 36°C over central mainland,
 from 26°C to 35°C over rest parts.



Deviation of minimum temperature from normal values



P r e c i p i t a t i o n

First 10-day period

Lack of precipitation.

More specific:

Δεύτερο δεκαήμερο Second 10-day period

Locally significant amounts of precipitation over central and north parts.

More specific:

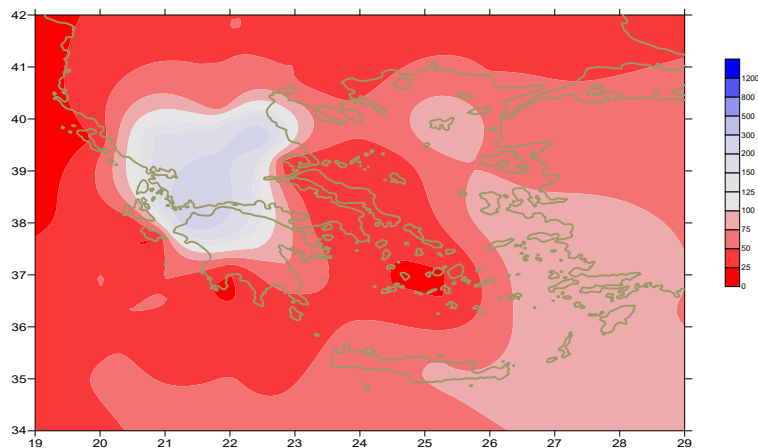
10mm in Doxato, 6mm in Tithorea, 4mm in Edessa,
2mm in Soufli, 2mm in Kavala (11/8),
30mm in Larisa, 18mm in Skiathos, 8mm in Aghialos,
2mm in Thessaloniki, 2mm in Karisto,
3mm in Skiros, 3mm in Spata (12/8),
6mm in Kastoria (18/8),
6mm in Doxato, 4mm in Thessaloniki, 9mm in Kastoria,
3mm in Kozani, 7mm in Larisa (18/8),
9mm in Aghialos, 4mm in Ioannina (19/8).

Third 10-day period

Locally small amounts of precipitation.

More specific:

6mm in Thessaloniki (21/8), 2mm in Kozani (25/8),
9mm in Preveza, 20mm in Ioannina, 8mm in Kranea,
4mm in Larisa (26/8),
19mm in Araxos, 12mm in Ioannina, 11mm in Adravidia,
4mm in Argostoli (27/8),
3mm in Edessa (29/8), 2mm in Limnos (30/8).



**Deviation of monthly precipitation height
from normal values (%)**

TABLE OF MEAN VALUES

STATION	Longitude	Lattitude	Tmean	TX	TN	RR	INST
SERRES	23,53	41,07	29,6	38,2	19,9	2	338
FLORINA	21,40	40,78					
KASTORIA	21,27	40,45	25,9	33,3	14,8	16	319
TRIKALA_IMATHIAS	22,55	40,60					
THESSALONIKI	22,97	40,52	29,3	33,8	21,9	12	342
CHRYSOUPOLI	24,62	40,92	27,3	32	20,5	23	338
ALEXANDROUPOLI	25,95	40,85	28,3	33,3	20,5	5	364
KOZANI	21,83	40,28	27,2	34,1	18,1	10	
KERKYRA	19,92	39,62	29,4	34	22,8	1	341
IOANNINA	20,82	39,70	27,2	35	15,5	32	341
PREVEZA	20,76	38,91	28,3	33,2	22,3	10	
TRIKALA_THESSALIAS	21,77	39,52					
LARISA	22,45	39,65	28,7	35,4	19,4	40	318
LIMNOS	25,23	39,92	27,8	31,7	22,7	5	352
ARTA	21,00	39,17					
AGHIALOS	22,78	39,21	29	33,6	21,2	9	332
MYTILINI	26,60	39,05	28,9	33,2	24,1	0	348
VELO	22,77	37,97					
AGRINIO	21,35	38,60					
LAMIA	22,43	38,87					
ANDRAVIDA	21,28	37,92	28,7	34,5	20,5	11	368
SKYROS	24,48	38,96	27,8	29,3	24,1	3	348
ARGOSTOLI	20,50	38,12	29	33	23,7	6	353
ARAXOS	21,42	38,15	29,4	34	21,9	18	341
TANAGRA	23,57	38,33	29,6	34,7	20,6	0	350
HIOS	26,13	38,35	28,5	32,3	23	0	356
PYRGOS	21,42	37,67					
TRIPOLI	22,40	37,52	26,4	33,6	16,2	15	318
TATOI	23,78	38,10	29,5	34,3	22,7	0	
HELLINIKO	23,73	37,90	30,2	35,1	25,4	0	364
ELEYSINA	23,55	38,07	30,9	35,3	25,1	0	
ZAKYNTHOS	20,88	37,75	29,9	34,3	23	0	374
SAMOS	26,92	37,68	30,3	34,5	24,6	0	
ARGOS	22,75	37,63					
KALAMATA	22,02	37,07	28,9	34,7	20,8	0	350
NAXOS	25,37	37,10					
METHONI	21,70	36,82					
MHLOS	24,43	36,73					
SPATA	23,95	37,95					
KOS	27,08	36,80	28,5	33,4	24,5	0	
KYTHIRA	22,98	36,15					
SANTORINI	25,41	36,41	28,4	31,2	25,5	0	336
SOUDA	24,12	35,55	28,6	32,8	23,8	0	368
RODOS	28,08	36,40	30	32,7	26,8	0	358
MYKONOS	25,35	37,43	28,4	31,6	25,3	0	
HRACLEIO	25,18	35,33	28,6	31,2	24,4	0	368
IERAPETRA	25,73	35,02					
SITEIA	26,10	35,21	27,6	30,2	26,1	0	331
RETHYMNO	24,50	35,36					
TYMPAKI	24,76	35,06					
KASTELI	25,33	35,18	27,1	31,2	22,7	0	341
KARPATOS	27,15	35,42					
PAROS	25,13	37,02	29	39,7	23,9	0	361
SYROS	24,95	37,42	28,5	31,8	25,8	0	346
IKARIA	26,35	37,68					

11,314,58,13617810,214,16,45611,314,57,89612510,713,7820210,5165,88616112,715,410,232137

**TABLE OF DEVIATIONS
FROM NORMAL VALUES**

STATION	TMEAN (deviation) (I)	PRECI (deviation %) (II)
SERRES	4.7	7
FLORINA		
THESSALONIKI	3.5	58
ALEXANDROUPOLI	3.1	47
KOZANI	3.8	32
KERKYRA	3.3	6
IOANNINA	3	113
LARISA	2.7	258
LIMNOS	3.2	67
AGHIALOS	3.1	48
MYTILINI	3	0
AGRINIO		
SKYROS	3	29
ARGOSTOLI	3.3	42
ARAXOS	2.8	300
HIOS	2.9	0
HELLINIKO	2.6	0
ZAKYNTHOS	3.3	0
SAMOS	2.6	0
KALAMATA	2.7	0
NAXOS		
METHONI		
SANTORINI	3.6	0
SOUDA	2.8	0
RODOS	3.1	0
HERAKLIO	2.7	0
SITIA	1.8	0

(I) deviation of mean temperature from normal values
 (II) deviation of monthly precipitation height from normal values %.

Climatic Bulletin

General Description

Precipitation amounts were lower than normal values in general, with lack of precipitation locally over central and north mainland. The mean temperature varied higher enough than normal values everywhere.

Climatic Parameters :

- ❖ **Normal Values** : normal values for various parameters (temperature, precipitation, etc) are defined as mean values calculated for 30 years. These normal values are used as basis and represent the mean situation. They can be specified in 10 daily, monthly, seasonally and yearly level and are used for the trend comparison of 10 days, month, season or year as: rainy decameron, mild winter, cool August etc.

Measurement :

- ❖ **Precipitation**
1 mm = 1 litre/m²

Table Legend :

Tmean : Mean Temperature
 TN : Minimum Temperature
 TX : Maximum Temperature
 RR : Precipitation height(mm)
 INST : Sun Duration (hours)

UTC hours (Universal Time Coordinates) in Greece :

- ❖ Winter : UTC hour = local hour - 2
- ❖ Summer : UTC hour = local hour - 3

© Hellenic National Meteorological Service
 Reproduction is prohibited without written authorization
 14 El.Venizelou 16777
 Helliniko, Athens
 Greece