




# Climatic Bulletin

August 2010

 **Max  
temperature**

 **Min  
temperature**

 **Mean  
temperature**

 **Precipitation**

 **Sunshine  
duration**



August was really hot for the whole country, with increased values of relative humidity for long periods.

In any case, the maximum temperature values did not reach the extreme ones.

Meanwhile, the gale force northern winds (well known as etesians) had a very short but remarkable appearance for three days period 21-23/8.



ΕΘΝΙΚΗ  
ΜΕΤΕΩΡΟΛΟΓΙΚΗ  
ΥΠΗΡΕΣΙΑ

HELLENIC NATIONAL METEOROLOGICAL SERVICE



# Temperature

## First Decameron

**Minimum:** The values were relatively low over NW mainland for the first three days.

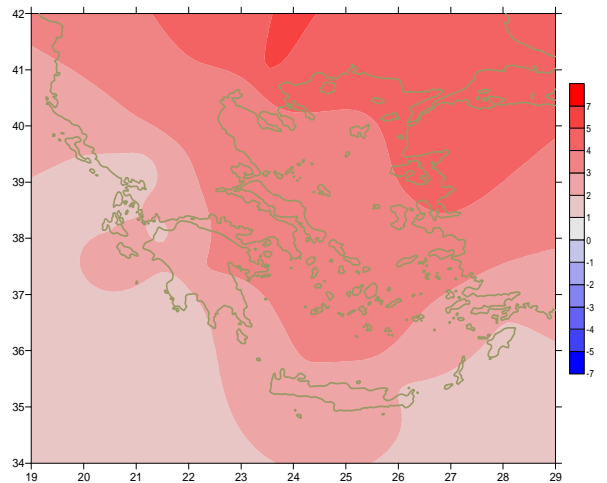
Some of the lowest:

$15.2^{\circ}\text{C}$  in *Kastoria* and  $15^{\circ}\text{C}$  in *Ioannina* at 1/8.

**Maximum:** High values recorded in the middle of the period.

More specific:

$38^{\circ}\text{C}$  in *Argos*,  $37.6^{\circ}\text{C}$  in *Serres* at 3/8 and  $38^{\circ}\text{C}$  in *Leonidio* at 10/8.



*Deviation of mean temperature from normal values*

## Second Decameron

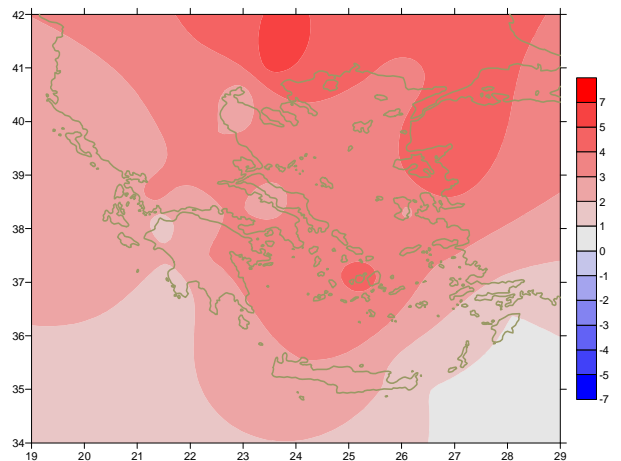
**Minimum:** The values increased in every part.

E.g: varried from  $17^{\circ}\text{C}$  to  $20^{\circ}\text{C}$  over NW mainland and from  $23^{\circ}\text{C}$  to  $27^{\circ}\text{C}$  over rest parts.

**Maximum:** High values mainly 13-16/8 everywhere.

More specific:

$40^{\circ}\text{C}$  in *N.Filadelfia*,  $40.4^{\circ}\text{C}$  in *Samos* at 13/8,  $40.6^{\circ}\text{C}$  in *Serres*,  $40.2^{\circ}\text{C}$  in *Agrinio* at 14/8.



*Deviation of maximum temperature from normal values*

## Third Decameron

**Minimum:** The values decreased rapidly over Northwestern parts.

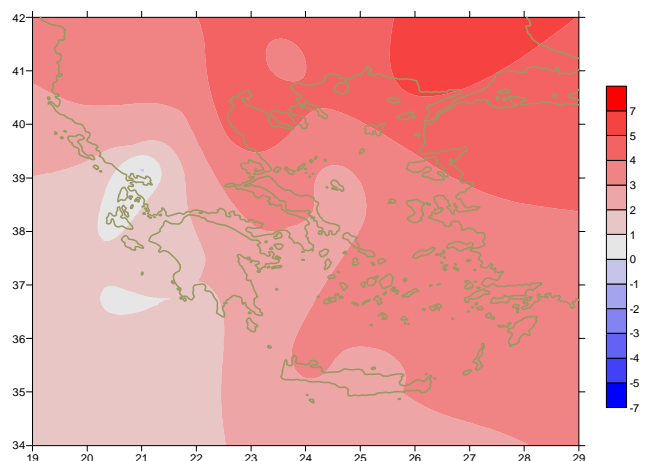
More specific:

$18.4^{\circ}\text{C}$  in *Kastoria* at 21/8 and  $13.2^{\circ}\text{C}$  in the same town at 24/8.

**Maximum:** high values which decreased temporarily and increased again since 25/8.

For example:

$39^{\circ}\text{C}$  in *Serres*,  $38.4^{\circ}\text{C}$  in *Hellinikon* and  $39.6^{\circ}\text{C}$  in *Agrinio* at 26/8.



*Deviation of minimum temperature from normal values*



## P r e c i p i t a t i o n

### First Decameron

Relatively high precipitation recorded in the middle of the

Period. More specific:

*25mm in Kozani,*

*11mm in Larisa, 11mm in Kastoria at 4/8.*

### Second Decameron

Not remarkable precipitation recorded over Met stations.

---

### Third Decameron

Not remarkable precipitation recorded over Met stations. .

### comment

The zero amounts of precipitation which recorded at the overwhelming majority of Met stations can not make a representative map for the current month. .

*Deviation of monthly precipitation height from normal values (%)*

TABLE OF MEAN VALUES

STATION	Longitude	Latitude	Tmean	TX	TN	RR	INST
SERRES	23,53	41,07	30	36,6	21,1	0	331
FLORINA	21,40	40,78					
KASTORIA	21,27	40,45	25,9	32,2	15,8	8	344
TRIKALA_IMATHIAS	22,55	40,60	27,9	34,8	20,7	3	322
THESSALONIKI	22,97	40,52	29,1	33,4	23,2	1	358
CHRYSOUPOLI	24,62	40,92	28,3	32,8	22,3	0	316
ALEXANDROUPOLI	25,95	40,85	29,7	34	22,5	0	365
KOZANI	21,83	40,28	27,1	32,8	18,4	25	
KERKYRA	19,92	39,62	28,2	33,2	21,2	0	367
IOANNINA	20,82	39,70	26,7	32,9	17,3	2	318
PREVEZA	20,76	38,91	26,8	31,1	21,3	0	
TRIKALA_THESSALIAS	21,77	39,52					
LARISA	22,45	39,65	29,4	35,4	20,9	14	352
LIMNOS	25,23	39,92	28,3	31,7	23,8	0	368
ARTA	21,00	39,17	27,3	34,4	19,4	0	364
AGHIALOS	22,78	39,21	29,5	34	22	0	355
MYTILINI	26,60	39,05	30,5	34,8	25,1	0	378
VELO	22,77	37,97	30,4	35,2	21,6	0	348
AGRINIO	21,35	38,60	29	36,6	18,9	0	380
LAMIA	22,43	38,87	29,5	35,4	21,1	0	297
ANDRAVIDA	21,28	37,92	27,6	32,2	20,2	0	357
SKYROS	24,48	38,96	27,9	30,4	24	0	339
ARGOSTOLI	20,50	38,12	27,7	31,8	21,9	1	380
ARAXOS	21,42	38,15	28,3	32,9	20,8	0	364
TANAGRA	23,57	38,33	29,7	34,2	21,6	0	371
HIOS	26,13	38,35	29,2	32,1	23,8	0	351
PYRGOS	21,42	37,67	27	33	16,5	0	359
TRIPOLI	22,40	37,52	29,2	33,3	22,7	0	
TATOI	23,78	38,10	30,8	35,1	25,2	0	365
HELLINIKO	23,73	37,90	31,6	35,5	25,8	0	
ELEYSINA	23,55	38,07	29,5	33,5	22,1	0	379
ZAKYNTHOS	20,88	37,75	31,2	35,2	25,5	0	380
SAMOS	26,92	37,68					
ARGOS	22,75	37,63	28,2	33,4	20,3	0	370
KALAMATA	22,02	37,07	27,8	30,4	25,1	0	377
NAXOS	25,37	37,10	26,7	30	22,2	0	367
METHONI	21,70	36,82					
MHLOS	24,43	36,73	29,7	33,4	22,2	0	
SPATA	23,95	37,95	27,9	32	24,6	0	
KOS	27,08	36,80					
KYTHIRA	22,98	36,15	28,6	31,4	25,4	0	360
SANTORINI	25,41	36,41	28,7	32,9	23,8	0	368
SOUDA	24,12	35,55	28,8	31,6	25,8	0	357
RODOS	28,08	36,40	27,6	30,3	25,1	0	
MYKONOS	25,35	37,43	28,3	31	23,9	0	355
HERAKLEIO	25,18	35,33	30	33,6	25,9	0	297
IERAPETRA	25,73	35,02	27,6	29,6	25,3	0	368
SITEIA	26,10	35,21					
RETHYMNO	24,50	35,36	29	33	23,1	0	339
TYMPAKI	24,76	35,06	26,8	31,4	21,7	0	351
KASTELI	25,33	35,18					
KARPATOS	27,15	35,42					
PAROS	25,13	37,02	28,6	31,6	24,9	0	369
SYROS	24,95	37,42	27	28,6	25,5	0	
IKARIA	26,35	37,68	27	33	16,5	0	359

# Climatic Bulletin

## General Description

Precipitation amounts were quite lower than normal values over the most parts.  
The mean temperature varied higher than normal values everywhere.  
The greatest deviation recorded over eastern regions and mainly over northwestern mainland.

### Climatic Parameters :

- ❖ **Normal Values** : normal values for various parameters (temperature, precipitation, etc) are defined as mean values calculated for 30 years. These normal values are used as basis and represent the mean situation. They can be specified in 10 daily, monthly, seasonally and yearly level and are used for the trend comparison of 10 days, month, season or year as: rainy decameron, mild winter, cool August etc.

### Measurement :

- ❖ **Precipitation**  
1 mm = 1 litre/m<sup>2</sup>

### Table Legend :

Tmean : Mean Temperature  
TN : Minimum Temperature  
TX : Maximum Temperature  
RR : Precipitation height(mm)  
INST : Sun Duration (hours)

### UTC hours (Universal Time Coordinates) in Greece :

- ❖ Winter : UTC hour = local hour - 2
- ❖ Summer : UTC hour = local hour - 3

© Hellenic National Meteorological Service  
Reproduction is prohibited without written authorization  
14 El.Venizelou 16777  
Helliniko, Athens  
Greece